

WEBINAR

PERFORMER SUITE WHAT'S NEW IN VERSION 21.2

MODERATOR



Alexander Kolmogorzew

Product Owner
Performer Suite

alexander.kolmogorzew@bluetelligence.de
Marktstr. 10 | D-65183 Wiesbaden
Tel +49 611 167 790 46

GENERAL INFORMATION

Update to 21.2

- Shipment of release 21.2 per e-mail
- Recommendation: Download 64-bit version
- Take note of important advice regarding the update
- Update Guide → [Step-by-step instruction](#)

System Scout has been enhanced with numerous new features over the past few years, so it's easy to lose track of all the tools available in your toolbox. We thought it has been time to consolidate and revise the analysis functions. The result is the ability to search for specific functions, so you can get an overview of all the features and use its full potential.

And: Starting with this release, you can also use System Scout for SAC. For example, you can conveniently display the structure, data flow and data source of your SAC objects.

Docu Performer: Document SAC Analytic Applications & comment HANA Fields

The already supported SAC Stories & Models are now joined by Analytic Applications and Templates, which can both be commented and documented. From the new version on, Calculation Views can also be commented on field level and the field comments are integrated into the documentation.

Would you like to test a product for free that you have not yet licensed? [Right this way!](#)

Any questions or problems? Have a look at our [User Manual and Knowledge Base](#) or create a ticket at our [Helpdesk](#)

Important Information on the Update

- As before every update, please make a **backup of your database** to avoid a possible loss of data.
- Updates are only possible in an annual cycle. To update to Performer Suite version 21.2, at least Docu Performer version 20.2 must be available.
- For the use of BW/4HANA systems, the license must be adapted. Please contact info@bluetelligence.de for this purpose.

[Update Guide](#)

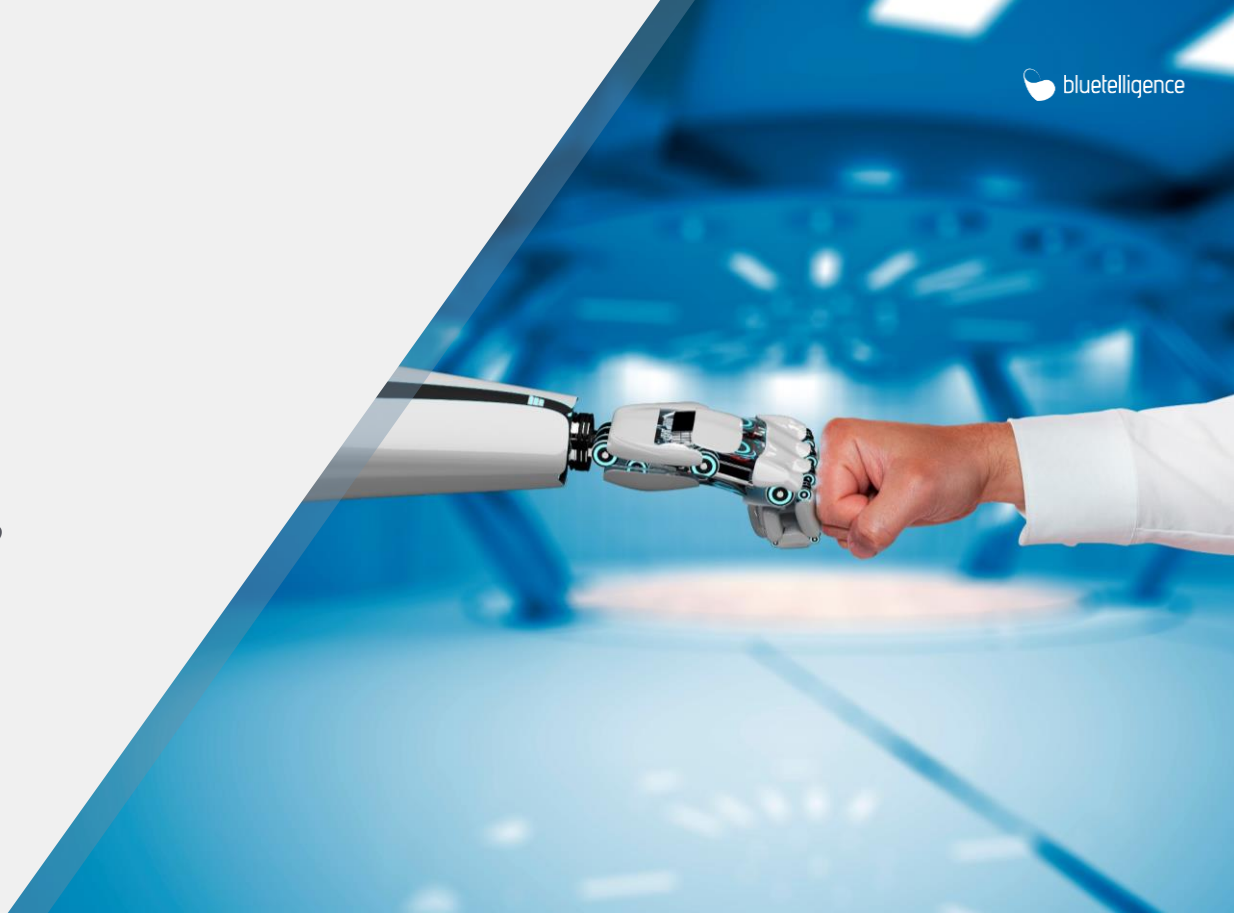
Download Software Version 21.2

[Performer Suite 21.2 \(zip\)](#)

[HANA Delivery Unit](#)



DOCU PERFORMER



IMPROVEMENTS DOCU PERFORMER

Commenting on individual HANA fields

- Comment Fields/Columns, Variables, and Parameters of Calculation Views
- Comment panel can be called in the Analyze & Compare function
- Comments are integrated into the Word and Excel documentation

The screenshot displays the SAP HANA Studio interface. On the left, a tree view shows the structure of a calculation view named 'CUSTOMER_DISCOUNT_BY_RANKING_AND_REGION'. The tree is divided into 'Columns' and 'Parameters'. A context menu is open over the 'REGION' column, with options for 'Show/Edit Comment' and 'Delete Comment'. On the right, the 'Components Commenting' dialog box is open, showing a search bar and a table of components. The table has columns for 'Parent entity', 'Name', and 'Comment'. The 'REGION' component is highlighted, with a comment 'Comment for Region' entered in the 'Comment' column.

Parent entity	Name	Comment
CUSTOMER_DISC...	Columns	
CUSTOMER_DISC...	REGION	Comment for Region
CUSTOMER_DISC...	COMPANY_NAME	
CUSTOMER_DISC...	DISCOUNT	
CUSTOMER_DISC...	SALES_AMER	
CUSTOMER_DISC...	SALES_EMEA	
CUSTOMER_DISC...	SALES_AFR	
CUSTOMER_DISC...	SALES_APJ	
CUSTOMER_DISC...	Parameters	
CUSTOMER_DISC...	IP_AMER	
CUSTOMER_DISC...	IP_EMEA	
CUSTOMER_DISC...	IP_AFR	
CUSTOMER_DISC...	IP_APJ	
CUSTOMER_DISC...	IP_FR_DTE	
CUSTOMER_DISC...	IP_TO_DTE	

IMPROVEMENTS DOCU PERFORMER

Support of Analytic Applications & Templates in SAC!

- Synchronization of Analytic Applications & Templates
- Possibility to comment and document both object types

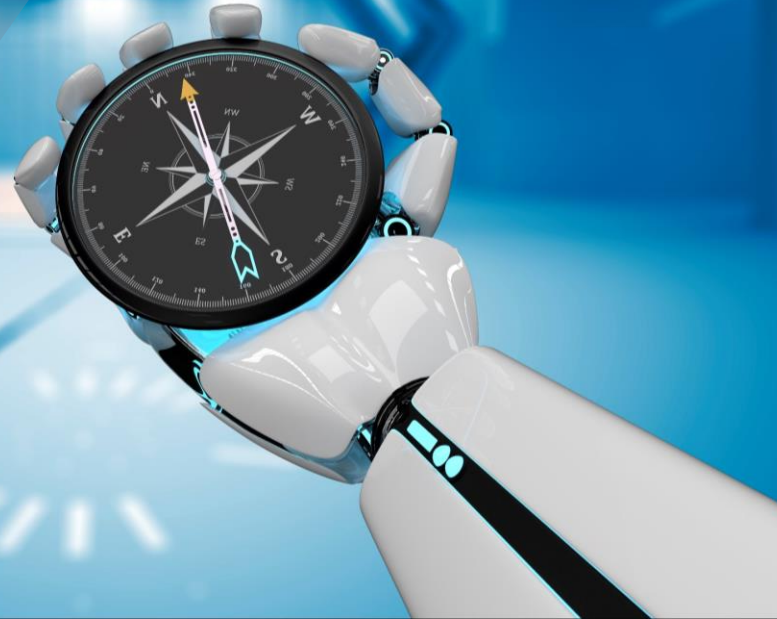
The screenshot shows the SAC interface with a table of objects and a context menu open over the 'Presentation - Report' row. The table columns are: Icon, Type, Technical Name, Description, Path, Create..., Created by, and Change Date.

Icon	Type	Technical Name	Description	Path	Create...	Created by	Change Date
	TMPL	Boardroom		/SYSTEM/Samples	18.03.2021	ADUERRS...	18.03.2021 14:16 UTC
	AAPL	ak_anap_test	Analytic Application with multiple da...	/AKOLMOG Private	26.05.2021	AKOLMOG	27.05.2021 07:34 UTC
	TMPL	Present		/SYSTEM/Samples	18.03.2021	ADUERRS...	18.03.2021 14:16 UTC
	TMPL	Presentation - Report		/SYSTEM/Samples	18.03.2021	ADUERRS...	18.03.2021 14:16 UTC
	AAPL	Sales Order Analy...	Display Data Flow	Public/Alexander Kolmogorzew	28.04.2021	AKOLMOG	28.04.2021 14:18 UTC
	TMPL	Dashboard	Assign Layer	SYSTEM/Samples	18.03.2021	ADUERRS...	18.03.2021 14:16 UTC
	AAPL	Flight Model Repo...	Scenario Assignment and Usage	Public/Alexander Kolmogorzew	05.05.2021	AKOLMOG	05.05.2021 08:13 UTC
	AAPL	Procurement Anal...	Scenario Quick Assignment	Public/Alexander Kolmogorzew	26.03.2021	AKOLMOG	26.03.2021 09:43 UTC
	TMPL	Report	Create Documentation	docx file	S...		18.03.2021 14:16 UTC
	AAPL	Performance Anal...	Open Documentation	PDF file (requires Office 2007 or later)	21.08.2021		23:15 UTC
	TMPL	Template_Story	List of all created documentations	HTML file (requires Office 2007 or later)	IG		23.04.2021 10:11 UTC
	TMPL	Template_Test1	Comments	docx + PDF file (requires Office 2007 or later)	IG		07.05.2021 08:43 UTC
	AAPL	Backlog Analysis	System Scout	Export docx file to Confluence (BETA)	S...		26.03.2021 10:09 UTC
	TMPL	Report (A4)	Others		S...		18.03.2021 14:16 UTC





SYSTEM SCOUT



IMPROVEMENTS SYSTEM SCOUT

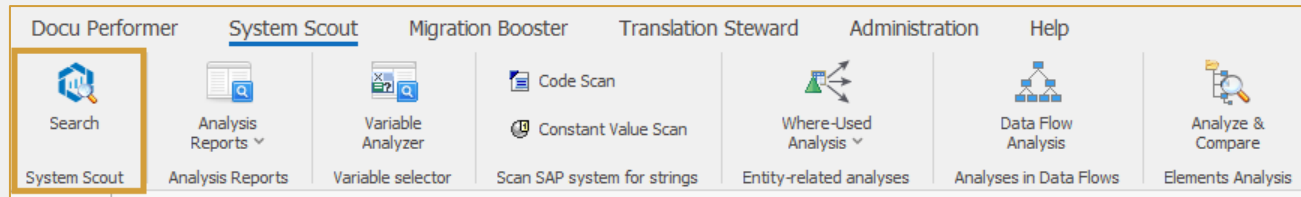
Improve overview regarding System Scout functions

- Consolidation of all existing functions
- Similar functions were combined
- Functions have been renamed with informative names
- Transparent and searchable display of all functions

IMPROVEMENTS SYSTEM SCOUT

New possibility to search functions!



- All System Scout functions can be searched based on keywords
- Inserted keywords can refer to the function title, description, supported objects types or matching tags
- Functions can be conveniently performed for all licensed systems in one view
- System changes are therefore no longer necessary for System Scout functions
- Popular functions can be favorited



Entities x System Scout x

Housekeeping

Filter the results:

★ Favorites  Licensed  BW & BW/4 ▼

<p>InfoProvider without Data Flow</p> <p>List all InfoProvider which are neither target nor source of a Transformation</p> <p>BW & BW/4 ★</p>	<p>Inactive Entities</p> <p>Identify all inactive Entities of a System</p> <p>BW & BW/4 ★</p>	<p>Key Figure Collection</p> <p>Resolve all local and reusable key figures of selected InfoProvider or Queries</p> <p>BW & BW/4</p>	<p>Variable Analyzer</p> <p>Search Variables based on their Types, InfoObjects, other properties and identify duplicates</p> <p>BW & BW/4</p>
<p>Redundant Reporting Elements</p> <p>Identify Reporting Elements with the same technical name but different UIDs</p> <p>BW & BW/4</p>	<p>Queries with specific Components</p> <p>List all Queries that include specific Components</p> <p>BW & BW/4</p>	<p>Resolve Transports</p> <p>List all Entities (incl. Reporting Elements) of a Transport</p> <p>BW & BW/4</p>	<p>System Comparison</p> <p>Compare all existing entities of two different systems</p> <p>BW & BW/4</p>
<p>Data Loads and Usages</p> <p>Provide an overview of the data volume, loads, and usages of InfoProviders, Process Chains, and Queries</p> <p>BW & BW/4</p>	<p>Naming Conventions</p> <p>Define and check Naming Conventions</p> <p>BW & BW/4</p>	<p>Unused InfoObjects</p> <p>Create a list of all InfoObjects without usage in your system</p> <p>BW & BW/4</p>	<p>Matrix of Usage</p> <p>Create a matrix of usage between Queries and InfoProvider InfoObject, Fields, and Reusable Key Figures</p> <p>BW & BW/4 ★</p>

IMPROVEMENTS SYSTEM SCOUT

Analyze and compare SAC objects!

- Display structure of SAC objects
- SAC objects can be compared across systems

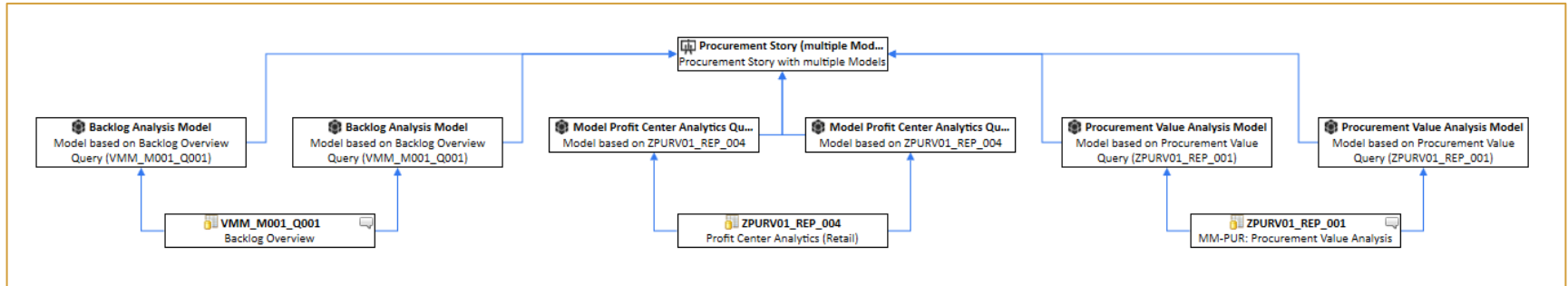
SAC2 - Analytic Applications Analysis for Multiple Entities

- Flight Model Report (Analytic Application) - Analytic Application based on the Flight Model Report (CDS Source)
 - Pages
 - Page 1 (CANVAS)
 - Models
 - Flight Model - Consumes an A4H object
 - A4H-Hetzner (A4H-Hetzner - BW - Live Data)
 - Z_C_FLIGHTBYAIRPORTQUERY - Flight by Airport
 - Z_C_FLIGHT_Q001 - Generated Table for View

- Performance Analysis Tool - Performance Analysis Tool
- Pages
 - Page 1 (CANVAS)
- Models
 - SAC_PERFORMANCE_E2E - End-to-end Application Performance
- Procurement Analysis (Analytic Application) - Analytic Application of Procurement Value
- Pages
 - Page 1 (CANVAS)
- Models
 - Procurement Value Analysis Model - Model based on Procurement Value Query (ZPURV01_REP_001)
 - A4H-Hetzner (A4H-Hetzner - BW - Live Data)
 - ZPURV01_REP_001 - MM-PUR: Procurement Value Analysis
 - Procurement Value Analysis Model - Model based on Procurement Value Query (ZPURV01_REP_001)
 - A4H-Hetzner (A4H-Hetzner - BW - Live Data)
 - ZPURV01_REP_001 - MM-PUR: Procurement Value Analysis

IMPROVEMENTS SYSTEM SCOUT

Explore SAC data flows



IMPROVEMENTS SYSTEM SCOUT

SAC internal where-used analysis

- Identify in which Stories/Analytic Applications specific Models are used

In SAC Entities							
Usage of	Icon	Type	Technical Name	Description	Path	System	Last Changed By
Procurement Value Analysis Model		AAPL	Procurement Analysis (An...	Analytic Application of Pro...	/Public/Alexander Kolmogo...	SAC2	AKOLMOG
Procurement Value Analysis Model		STOR	Procurement Story (multipl...	Procurement Story with m...	/Public/Alexander Kolmogo...	SAC2	AKOLMOG
Procurement Value Analysis Model		STOR	Procurement Story (multipl...	Procurement Story with m...		SAC Prod	AKOLMOG
Procurement Value Analysis Model		STOR	Procurement Story (multipl...	Procurement Story with m...	/Public/Alexander Kolmogo...	SAC2	AKOLMOG
Procurement Value Analysis Model		STOR	Procurement Story (multipl...	Procurement Story with m...		SAC Prod	AKOLMOG
Procurement Value Analysis Model		STOR	Procurement Value SAC D...	SAC Dashboard of Procure...	/Public/Alexander Kolmogo...	SAC2	AKOLMOG
Procurement Value Analysis Model		STOR	Procurement Value SAC D...	SAC Dashboard of Procure...		SAC Prod	AKOLMOG
Procurement Value Analysis Model		STOR	Procurement Value SAC D...	SAC Dashboard of Procure...	/Public/Alexander Kolmogo...	SAC2	AKOLMOG
Procurement Value Analysis Model		STOR	Procurement Value SAC D...	SAC Dashboard of Procure...		SAC Prod	AKOLMOG
Backlog Analysis Model		AAPL	Backlog Analysis (Analytic...	Analytic Application of Bac...	/Public/Alexander Kolmogo...	SAC2	AKOLMOG
Backlog Analysis Model		STOR	Backlog Overview SAC Da...	SAC Dashboard of Backdog...		SAC Prod	AKOLMOG



IMPROVEMENTS SYSTEM SCOUT

List DataSources of SAC Objects

- Helpful to get an overview regarding the used data sources of SAC Objects
- Supports Stories, Analytics Applications & Models
- Identify quickly which BW Query, HANA Calc. View or S/4 CDS View is the basis of specific SAC Objects

List Data Sources								
Data Sources of multiple Objects								
Type ▾								
	Analy...	Analyzed Object Techn...	Icon	Technical Name	Description	System	Model	Connection ID
Type: CALV								
STOR	Sales Order Ranking Story			SALES_ORDER_RAN...	SALES_ORDER_RANKING	HDB	HANA_SALES_O...	HDBHetzner
Type: DDLs								
STOR	Flight Data Story			Z_C_FLIGHTBYAIRP...		A4H	Flight Model	A4HHetzner
Type: REP								
STOR	Backlog Overview SAC D...			VMM_M001_Q001	Backlog Overview	BI2	Backlog Analysis...	BI2Hetzner
STOR	Procurement Story (multi...			ZPURV01_REP_004	Profit Center Analytics (...)	A4H	Model Profit Ce...	A4HHetzner
STOR	Procurement Story (multi...			ZPURV01_REP_001	MM-PUR: Procurement V...	A4H	Procurement Val...	A4HHetzner
STOR	Procurement Story (multi...			VMM_M001_Q001	Backlog Overview	BI2	Backlog Analysis...	BI2Hetzner



IMPROVEMENTS SYSTEM SCOUT

List DataSources of BO Reports

- Helpful to get an overview regarding the used data sources of BO Reports
- Supports Lumira, Design Studio, Analysis for Office and Web Intelligence
- Quickly identifies which BW Queries, InfoProviders or CDS views are the data source of specific BO reports

List Data Sources							
Data Sources of multiple Objects							
Type	Analyzed Ob...	Analyzed Object Techn. Name	Icon	Techn. Name	Description	System	Last Changed By
Type: DOLS							
	AWBO	Flight by Airport		Z_C_FLIGHTBYAIRPORTQUERY	Flight by Airport	A4H	ADUERKSTEIN
Type: HCPR							
	AWBO	Purchase Analysis		ZPURV01	MM-PUR: Purchase Overview	A4H	MHARING
Type: MPRO							
	LumiraDocu...	Purchasing Planning Dashboard		VMM_M001	MultiProvider Purchasing	BI2	ADUERKSTEIN
Type: REP							
	AWBO	Erwarteter Auftragsengang		/M0/N_SD10_Q0005	SD: Expected Incoming Orders Based on Open Quotations	A4H	SAP
	AWBO	Offene Aufträge		/M0/N_SD10_Q0002	SD: Open Orders	A4H	SAP
	AWBO	Ordnungsgemäße Auftragsbefreiung		/M0/N_SD50_Q0003	SD-DLV: Perfect Order Fulfillment	A4H	MHARING
	AWBO	Procurement Value Dashboard		ZPURV01_REP_001	MM-PUR: Procurement Value Analysis	A4H	ADUERKSTEIN
	AWBO	Purchase Analysis		VMM_M001_Q001	Backlog Overview	BI2	MHARING
	AWBO	Rückläufer Analyse		/M0/N_FICA06_Q0001	FI-CA: Returns	A4H	SAP
	LumiraDocu...	Fakuraübersicht		/M0/N_SD30_Q0001	SD: Billing Overview	A4H	SAP
	LumiraDocu...	FI Dashboard - Payment History		/M0/N_FIAR03_Q0001	FI-AR: Payment History	A4H	MHARING
	LumiraDocu...	Konditionen Dashboard		/M0/N_SD40_Q0001	Condition Amount (Sales Order Doc. and Billing Doc.)	A4H	SAP
	LumiraDocu...	Konditionen Dashboard		/M0/N_SD40_Q0001	SD: Condition Value per Customer (Order)	A4H	SAP
	LumiraDocu...	Procurement Analysis		ZPURV01_REP_001	MM-PUR: Procurement Value Analysis	A4H	ADUERKSTEIN
	LumiraDocu...	Purchasing Analysis		VMM_M001_Q001	Backlog Overview	BI2	MHARING
	LumiraDocu...	Rückläuferinformationen		/M0/N_FICA06_Q0001	FI-CA: Returns	A4H	SAP



Overview – What's New in 21.2

General Improvements:

- [Support of new SAC Entities \(Analytic Applications & Templates\)](#)
- [New way to connect to HANA systems via SQL connection](#)

Improvements Docu Performer:


- [Commenting on individual HANA fields](#)

Improvements System Scout:

- [New possibility to search functions!](#)
- [Analyze and Compare SAC](#)
- [Where-Used Analysis of SAC Entities](#)
- [List Data Sources of SAC Objects](#)
- [List Data Sources of BO Reports](#)
- [Display SAC Dataflow](#)

GENERAL INFORMATION

Check our Updated User Manual 21.2

- Explanation of all new functions
- Supports you with info graphics & tutorials
- Will be updated every release!
-  [User Manual](#) → Link to the respective article of the function

USER MANUAL
VERSION 21.2




PERFORMER SUITE

APPENDIX

INFORMATION SOURCES AFTER THIS WEBINAR

Important Notes

- Email after the webinar
- Recording of today's webinar → [YouTube Channel](#)
- Further information & overview of future webinars → [Website](#)
- Complete list of all improvements & changes → [Version History](#)
- Technical support & feature requests → [Helpdesk](#)

FREE TRIAL VERSION



Free Trial
Version

Would you like to try out the features yourself?

- Full functionality for up to 30 days
- No costs or obligation
- Testing guide, individual websessions or on site assistance for efficient trial

Thanks for your attention!



Marktstraße 10 | 65183 Wiesbaden
Telefon: +49 611 167 790 40

info@bluetelligence.de