

WEBINAR

PERFORMER SUITE WHAT'S NEW IN VERSION 22.2

GENERAL INFORMATION

Update to 22.2

- Shipment of release 22.2 per e-mail
- Take note of important advice regarding the update
- Update Guide → [Step-by-step instruction](#)
- Minimum version for update: 21.2
- Hint: Starting with version 22.2, **.NET Framework 4.8** is a prerequisite for the Performer Suite. Version 4.8 is shipped with Windows 10 version 1903 by default

GENERAL IMPROVEMENTS

GENERAL IMPROVEMENTS

Support of Transports

- Transports can be synchronized, commented & documented
- Analyze & Compare can be used to analyze and comment on the assigned objects

Name	Technical Name	Description	Type
<ul style="list-style-type: none"> A#HK900147 - Added [0CUP_DEP] 'Cumulative Unplanned Depreciation' - Workbench Request - Modifiable - ADUERRSTEIN 	A4HK900147	Added [0CUP_DEP] 'Cumulative Unplanned Depreciation'	REQU
<ul style="list-style-type: none"> <ul style="list-style-type: none"> A#HK900148 - Added [0CUP_DEP] 'Cumulative Unplanned Depreciation' - Development/Correction - Modifiable - ADUERI 	A4HK900148	Added [0CUP_DEP] 'Cumulative Unplanned Depreciation'	REQU
<ul style="list-style-type: none"> <ul style="list-style-type: none"> <ul style="list-style-type: none"> 33D5WAB58LL8VXJIGNK4D52K9 	/IMO/V_FIAA01_CK_DEPR_FYS	Annual: Accumul. Depreciation at Fiscal Year Start	ELEM
<ul style="list-style-type: none"> <ul style="list-style-type: none"> <ul style="list-style-type: none"> ZPLAYGROUND 	ZPLAYGROUND		DEVC
<ul style="list-style-type: none"> A#HK900148 - Added [0CUP_DEP] 'Cumulative Unplanned Depreciation' - Development/Correction - Modifiable - ADUERRSTI 	A4HK900148	Added [0CUP_DEP] 'Cumulative Unplanned Depreciation'	REQU
<ul style="list-style-type: none"> <ul style="list-style-type: none"> 33D5WAB58LL8VXJIGNK4D52K9 	/IMO/V_FIAA01_CK_DEPR_FYS	Annual: Accumul. Depreciation at Fiscal Year Start	ELEM
<ul style="list-style-type: none"> <ul style="list-style-type: none"> ZPLAYGROUND 	ZPLAYGROUND		DEVC
<ul style="list-style-type: none"> A#HK900149 - Added [0CREV_OD] 'Cumulative Revaluation of Ordinary Depreci' - Workbench Request - Modifiable - MHARI 	A4HK900149	Added [0CREV_OD] 'Cumulative Revaluation of Ordinary Depreci	REQU
<ul style="list-style-type: none"> <ul style="list-style-type: none"> A#HK900150 - Added [0CREV_OD] 'Cumulative Revaluation of Ordinary Depreci' - Development/Correction - Modifiable - A4HK900150 	A4HK900150	Added [0CREV_OD] 'Cumulative Revaluation of Ordinary Depreci	REQU
<ul style="list-style-type: none"> <ul style="list-style-type: none"> <ul style="list-style-type: none"> 33D5WAB58LL8VXJIGNK4D52K9 	/IMO/V_FIAA01_CK_DEPR_FYS	Annual: Accumul. Depreciation at Fiscal Year Start	ELEM
<ul style="list-style-type: none"> <ul style="list-style-type: none"> <ul style="list-style-type: none"> OFFIE7DVQM2BUHWW1TXBY6PGZXWKF2U7 	OFFIE7DVQM2BUHWW1TXBY6PGZXWKF2U7		TRFN
<ul style="list-style-type: none"> <ul style="list-style-type: none"> <ul style="list-style-type: none"> DTP_055QGZV4AT4VPXNGTXREKW4LG 	DTP_055QGZV4AT4VPXNGTXREKW4LG		DTPA
<ul style="list-style-type: none"> <ul style="list-style-type: none"> <ul style="list-style-type: none"> DTP_055QGZV4AT4VPXNGTDSBLM9MR 	DTP_055QGZV4AT4VPXNGTDSBLM9MR		DTPA
<ul style="list-style-type: none"> <ul style="list-style-type: none"> <ul style="list-style-type: none"> 02U5BY34LYSGUXOTP12Z5I84059Q2XVY 	02U5BY34LYSGUXOTP12Z5I84059Q2XVY		TRFN
<ul style="list-style-type: none"> <ul style="list-style-type: none"> <ul style="list-style-type: none"> DTP_055QGZV4AT4VPXNGSK6V8O08M 	DTP_055QGZV4AT4VPXNGSK6V8O08M		DTPA
<ul style="list-style-type: none"> A#HK900150 - Added [0CREV_OD] 'Cumulative Revaluation of Ordinary Depreci' - Development/Correction - Modifiable - MH 	A4HK900150	Added [0CREV_OD] 'Cumulative Revaluation of Ordinary Depreci	REQU
<ul style="list-style-type: none"> <ul style="list-style-type: none"> 33D5WAB58LL8VXJIGNK4D52K9 	/IMO/V_FIAA01_CK_DEPR_FYS	Annual: Accumul. Depreciation at Fiscal Year Start	ELEM
<ul style="list-style-type: none"> <ul style="list-style-type: none"> <ul style="list-style-type: none"> OFFIE7DVQM2BUHWW1TXBY6PGZXWKF2U7 	OFFIE7DVQM2BUHWW1TXBY6PGZXWKF2U7		TRFN
<ul style="list-style-type: none"> <ul style="list-style-type: none"> <ul style="list-style-type: none"> DTP_055QGZV4AT4VPXNGTXREKW4LG 	DTP_055QGZV4AT4VPXNGTXREKW4LG		DTPA
<ul style="list-style-type: none"> <ul style="list-style-type: none"> <ul style="list-style-type: none"> DTP_055QGZV4AT4VPXNGTDSBLM9MR 	DTP_055QGZV4AT4VPXNGTDSBLM9MR		DTPA
<ul style="list-style-type: none"> <ul style="list-style-type: none"> <ul style="list-style-type: none"> 02U5BY34LYSGUXOTP12Z5I84059Q2XVY 	02U5BY34LYSGUXOTP12Z5I84059Q2XVY		TRFN
<ul style="list-style-type: none"> <ul style="list-style-type: none"> <ul style="list-style-type: none"> DTP_055QGZV4AT4VPXNGSK6V8O08M 	DTP_055QGZV4AT4VPXNGSK6V8O08M		DTPA

GENERAL IMPROVEMENTS

Support of Transports

The screenshot displays a table of components in SAP S/4HANA. The table has columns for Name, Technic..., Description, and Type. A comment icon (speech bubble) is visible next to the component '33D5WAB58LL8VXJIGNK4DS2K9'. An orange arrow points from this icon to the 'Components Commenting' dialog box on the right.

Name	Technic...	Description	Type
A4HK900149 - Added [0CREV_OD] 'Cumulative Reval...	A4HK90...	Added [0CREV_...	REQU
A4HK900150 - Added [0CREV_OD] 'Cumulative Re...	A4HK90...	Added [0CREV_...	REQU
33D5WAB58LL8VXJIGNK4DS2K9	/IMO/V...	Annual: Accumul...	ELEM
OFFIE7DVQM2BUHWW1TXBY6PGZXWKF2U7	OFFIE7...		TRFN
DTP_055QGZV4AT4VPXNGTXREKW4LG	DTP_05...	RSDS Z_2LIS_0...	DTPA
DTP_055QGZV4AT4VPXNGTDSBLM9MR	DTP_05...	RSDS Z_2LIS_0...	DTPA
02U5BY34LY5GUXOTP12Z5I84059Q2XVY	02U5BY...		TRFN
DTP_055QGZV4AT4VPXNGSK6V8O08M	DTP_05...	RSDS Z_2LIS_0...	DTPA
ZPURDW11	ZPURD...	MM-PUR: Purch...	ADSO
ZPURDW13	ZPURD...	MM-PUR: Purch...	ADSO
ZPURDW21	ZPURD...	MM-PUR: Purch...	ADSO
ZPURDW22	ZPURD...	MM-PUR: Purch...	ADSO
ZPURV02	ZPURV02	MM-PUR: Contr...	HCPR
ZPURV03	ZPURV03	MM-PUR: Purch...	HCPR
ZPURV04	ZPURV04	MM-PUR: Purch...	HCPR

Components Commenting

Comment Language: En (English)

Drag a column header here to group by that column

Parent entity	Name	Comment
A4HK900150	33D5WAB58LL8VXJIGNK4...	Added [0CREV_OD] 'Cumulative Revaluation of Ordinary Depreciation
A4HK900150	OFFIE7DVQM2BUHWW1TX...	
A4HK900150	DTP_055QGZV4AT4VPXNG...	
A4HK900150	DTP_055QGZV4AT4VPXNG...	
A4HK900150	02U5BY34LY5GUXOTP12Z...	
A4HK900150	DTP_055QGZV4AT4VPXNG...	
A4HK900150	ZPURDW11	
A4HK900150	ZPURDW13	
A4HK900150	ZPURDW21	

GENERAL IMPROVEMENTS

Improved security

- New policies and conditions when Performer Suite passwords are created.
- Communication between Performer Suite and the database is encrypted more securely.

The screenshot shows a user creation form with the following fields and options:

- Radio buttons for user types: Application User (selected), SAP BW/ERP User, SAP BO User, SAP HANA User, and SAC User.
- Role*: User (dropdown menu)
- User ID*: Max (text input)
- Password*: [Redacted with dots]
- Confirm password*: [Empty text input]
- Email address*: [Empty text input]
- Full name: [Empty text input]
- Department: [Empty text input]
- Additional products: Migration Booster and Translation Steward (checkboxes)
- Buttons: Save and Cancel

A red-bordered box highlights the password conditions: **Password conditions: At least 12 characters, 1 uppercase letter, 1 lowercase letter, 1 special character required.**

Below the highlighted box, it says: Last changed by N/A, N/A.



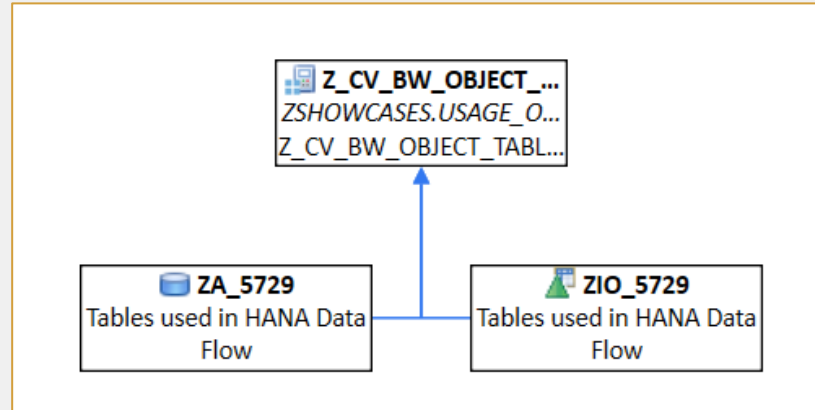
SYSTEM SCOUT



IMPROVEMENTS SYSTEM SCOUT

BW Tables in HANA Dataflows

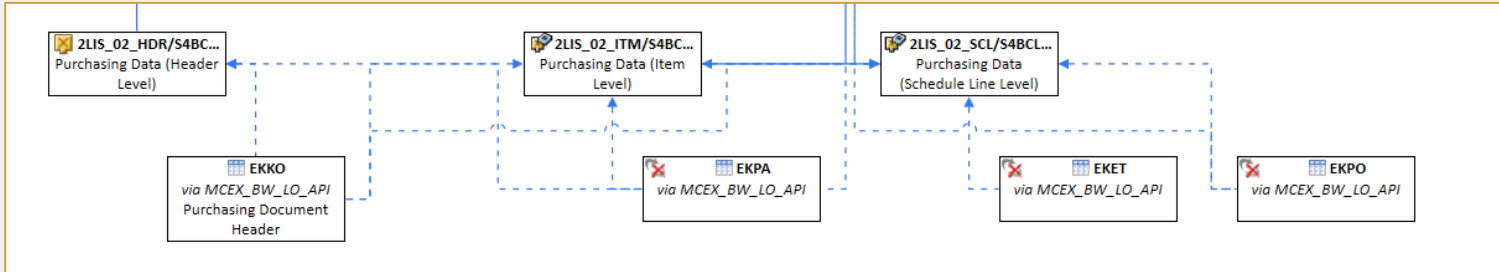
- BW tables are displayed in the HANA data flow as BW objects
- The BW objects can then be documented or further analyzed



IMPROVEMENTS SYSTEM SCOUT

Logistics Source Tables in BW Dataflows (BETA)

- Logistics source tables are displayed below ERP DataSources
- Important: The ERP system has to be licensed as well!



IMPROVEMENTS SYSTEM SCOUT

AfO Document Links in

- The document link of Analysis for Office reports is displayed in the results of BW where-used lists
- This allows a direct jump to the BO reports
- Integration into the documentation via Scenarios

Where-Used Analysis for ZPURV01_REP_001

In BO Reports

Entities: 2

Usage of	Technical name	Description	Applic...	CUID	Document Link
ZPURV01...	Procurement Valu...	Procurement Value...		FhuVHQCYOQ...	http://btsapserv.bluetelligence.de:8080/BOE/OpenDocument/...
ZPURV01...	Procurement Anal...	Procurement Analysi...	BASI...	Fnz.NwCdFQO...	

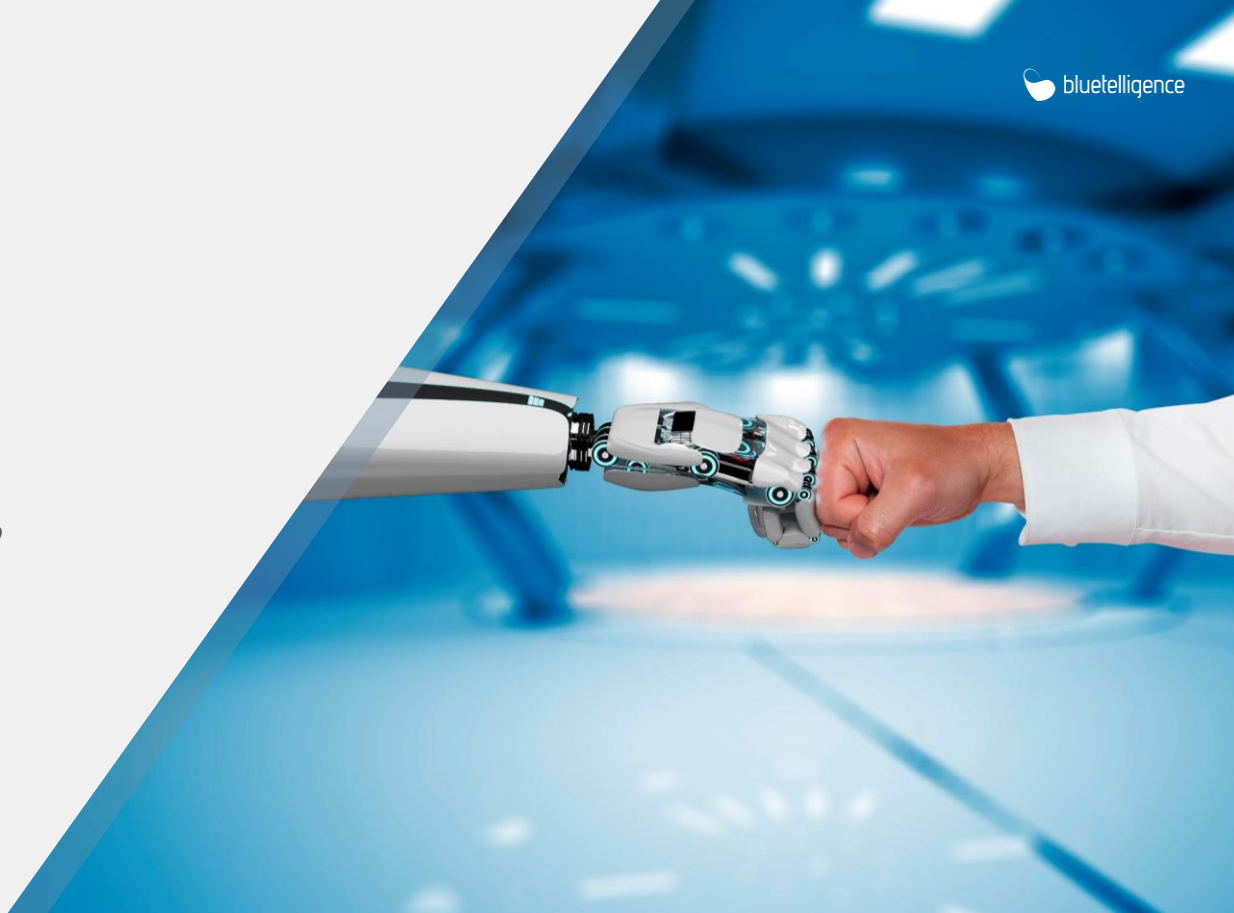
Column Chooser

Search Columns...

- Usage of
-
- Technical name
- Description
- Application/Composite
- CUID
- Document Link
- Path



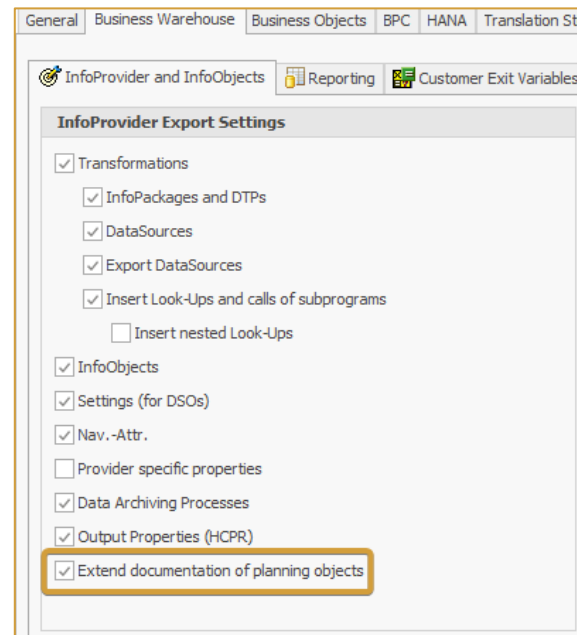
DOCU PERFORMER



IMPROVEMENTS DOCU PERFORMER

Better overview of planning models


- The documentation of the planning sequences has been extended with the selected filters & planning functions.
- The documentation of the aggregation levels was extended with the documentation of the related planning sequences
- Improved documentation of the dependencies of the planning model




IMPROVEMENTS DOCU PERFORMER

Better overview of planning models

3 Related Reporting Entities

Type	Technical Name	Description	Change Date
	ZSOB_5518_1	Filter on AL - FR 5518	29.06.2022

4 Related Planning Sequences




Type	Technical Name	Description
	ZSEQ_5518	ZSEQ_5518

4.1 Planning Sequence ZSEQ_5518

Type	Aggr. Level	Filter	Planning Function
Planning Service	ZAL_5518, ZAL_5518	ZSOB_5518_1, Filter on AL - FR 5518	ZPLF_5518_3, ZPLF_5518_3
Planning Service	ZAL_5518, ZAL_5518	ZSOB_5518_1, Filter on AL - FR 5518	ZPLF_5518, ZPLF_5518

4 Selected Filters

4.1 Filter ZSOB_5518_1 - Filter on AL - FR 5518

Character. (Description)	Character. (Tech. Name)	Selection
Local Currency	0LOC_CURRRCY	 [CHF] Swiss Franc
Material	0MATERIAL	 [0CISO_MATERIAL] Material
Company	0COMPANY	 [1] 1

5 Selected Planning Functions

5.1 Planning Function ZPLF_5518_3 - ZPLF_5518_3

System	A4H
Aggregation Level	ZAL_5518, ZAL_5518
Type	0RSPL_FORMULA, Formula
Class	CL_RSPLFC_FORMULA
Last change (timestamp)	29.06.2022 11:13:06
Timestamp of documentation	14.09.2022 14:34:28

5.1.1 Use of Characteristics

Character. (Description)	Character. (Tech. Name)	Will be changed	Used in Conditions
Material	0MATERIAL		X

5.1.2 Condition Nr.: 1

Character. (Description)	Character. (Tech. Name)	Selection
Material	0MATERIAL	

5.1.3 Formula of Planning Function ZPLF_5518_3

{0ORDER_TOT} = {0ORD_PLND}.

5.2 Planning Function ZPLF_5518 - ZPLF_5518

IMPROVEMENTS DOCU PERFORMER

New information in class documentation

- Parameters of methods were added to the documentation of classes

4 Method (Details)

4.1 GET_NUMBER_OF_TYPE

4.1.1 Parameters

Parameter	Type	Pass Value	Opt.	Typing Method	Associated type	Default Value	Description
TYPE	Importing	X		Type	TROBJTYPE		Object Type
RUN	Importing		X	Type	INTEGER		Whole Number with +/- Sign (-2 147 483 648 -2 147 483 647)
TEST2	Importing		X	Type	INTEGER	23	Whole Number with +/- Sign (-2 147 483 648 -2 147 483 647)
AMOUNT	Exporting	X		Type	INTEGER		overwritten
TEST3	Exporting	X		Type	INTEGER		Whole Number with +/- Sign (-2 147 483 648 -2 147 483 647)
TEST1	Changing	X		Type Ref To	/1BCDWB/WS C0040615164 730935892		Generated Class for Simple Transformation
TEST5	Returning			Type	INTEGER		Whole Number with +/- Sign (-2 147 483 648 -2 147 483 647)

4.1.2 Source Code

```
method GET_NUMBER_OF_TYPE.  
    if type = 'ADSO'.  
        Select Count(*) from RSOADSO where OBJVERS = 'A' into @amount.  
    elseif type = 'HCPR'.  
        Select Count(*) from RSOHCPR where OBJVERS = 'A' into @amount.  
    endif.  
endmethod
```

Overview – What's New in 22.2

General Improvements:

- Transports are supported as an object type
- Enhancement of Security & improved password policy

Improvements System Scout:

- BW tables are displayed in the HANA data flow as BW objects
- Logistics source tables are displayed below ERP DataSources
- Display the document link of Analysis for Office reports in the results of the Where Used Analysis

Improvements Docu Performer:

- Parameters of methods were added to the documentation of classes
- The documentation of the planning objects has been extended

GENERAL INFORMATION

Check our updated User Manual 22.2

- Explanation of all new functions
- Supports you with info graphics & tutorials
- Will be updated every release!
-  → Link to the respective article of the function

APPENDIX

INFORMATION SOURCES AFTER THIS WEBINAR

Important Notes

- Recording of today's webinar → [YouTube Channel](#)
- Further information & overview of future webinars → [Website](#)
- Complete list of all improvements & changes → [Version History](#)
- Technical support & feature requests → [Helpdesk](#)

Thanks for your attention!



Marktstraße 10 | 65183 Wiesbaden
Telefon: +49 611 167 790 40

info@bluetelligence.de