

**WORK SMARTER, NOT HARDER –  
MEET THE PERFORMER SUITE**



PERFORMER SUITE





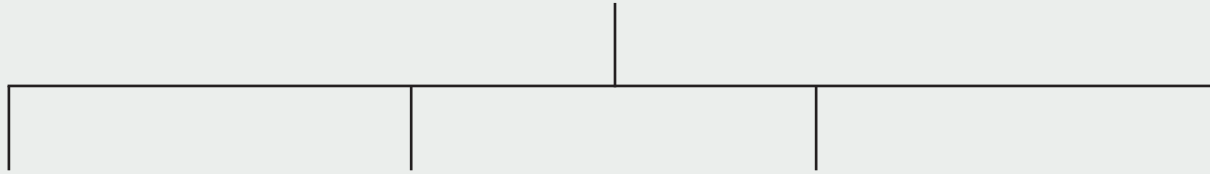
# Über uns

# KURZ



## **PERFORMER SUITE**

Work smarter, not harder –  
Automate your SAP Business Analytics.



**DOCU PERFORMER**

Automate technical  
SAP documentation



**SYSTEM SCOUT**

Analyze & maintain  
SAP systems at the  
push of a button



**MIGRATION BOOSTER**

Accelerate  
BW/4HANA  
migrations



**TRANSLATION STEWARD**

Effortlessly translate  
SAP BW systems

# CHALLENGES **WITHOUT** PERFORMER SUITE

"Due to increasing operations in latin america Business needs many reports also in the spanish language. The manual translation of the BW descriptions is very annoying and time-consuming!"

"Which SAC & BO reports are affected by the change of this Query?"



**Bibi, BI Developer**

"An audit is upcoming and our SAP documentation is incomplete and not up to date!"

"What is the formula behind this key figure?"

"Oh no, SAP announced end of maintenance for BW 7.4! How can I accelerate the BW/4HANA migration and selectively migrate individual data models?"

"Where does the data come from?"



**Conny, Controller**



**Sabrina, BI Managerin**

# HOW TO BENEFIT FROM THE PERFORMER SUITE



**Conny, Controller**

**“I have a lot more time to actually analyse and evaluate data. Also, I’m able to find relevant information so much faster!”**

- Shortened IT response times for questions and requests
- Ability of own research for information
- Standardized formats facilitate the orientation within the information
- Updatable Key Figure catalogues at the touch of a button
- Filing of technical descriptions and comments



**Bibi, BI Developer**

**“Many tasks became so much easier with the help of the Performer Suite. Estimating project related impacts and efforts is now simplified.”**

- Relief from routine tasks and therefore more time for key activities
- Better traceability of changes within the system
- Avoiding clerical errors due to automation
- Faster processing of requirements from the departments
- Improved clarity, fastened error analysis
- Greater transparency of provided information due to standardized formats



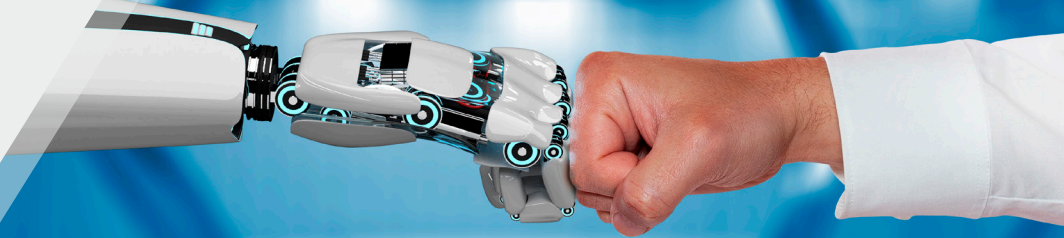
**Sabrina, BI Managerin**

**“I’m so excited we’re finally using the Performer Suite. My team is more relaxed as all relevant information can be found in one place!”**

- Cost reduction due to automation while improving quality
- Simple fulfilment of internal and legal requirements
- Fast and detailed provision of documents for auditing or internal revision
- Creating a documentation standard
- Securing of valuable expertise, due to central availability of knowledge
- Fast return on investment



DOCU PERFORMER



PERFORMER SUITE

## USE CASE

Automated, technical documentation and commenting of SAP objects

## TARGET GROUP

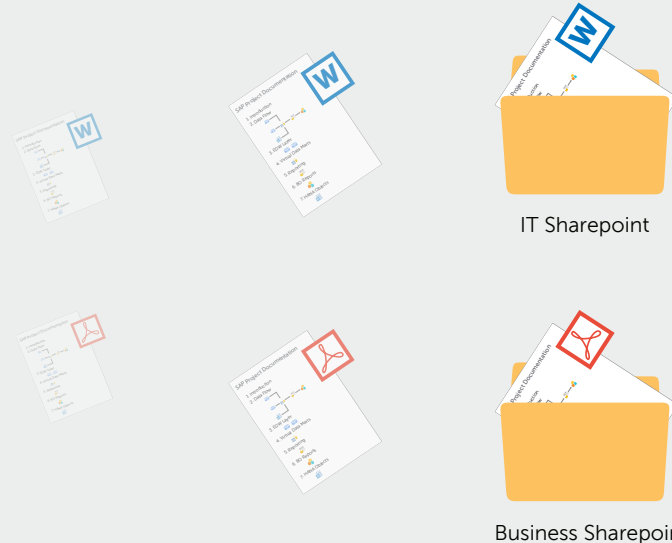
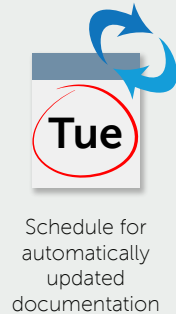
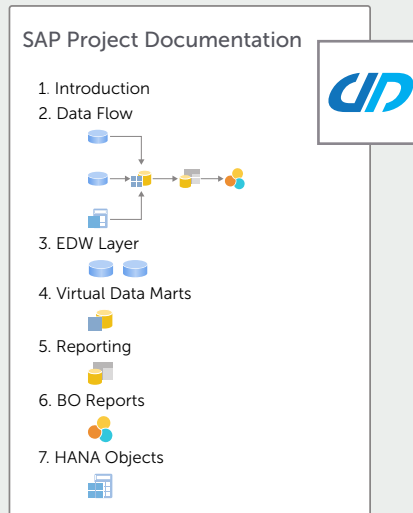
SAP BI Developers & Departments

## SUPPORTED SYSTEM TYPES

BW HANA BO SAC BPC S/4

## FUNCTIONS

- Documenting individual objects
- Overall documentation of related objects (e.g. data models)
- Commenting of objects
- Scheduled document creation
- Configuration of documentation content
- Various output formats: Word, Excel, PowerPoint, PDF, HTML, Confluence





# SYSTEM SCOUT



PERFORMER SUITE



## USE CASE

Analysis tools for daily development and maintenance work (AMS) in SAP BI environment

## TARGET GROUP

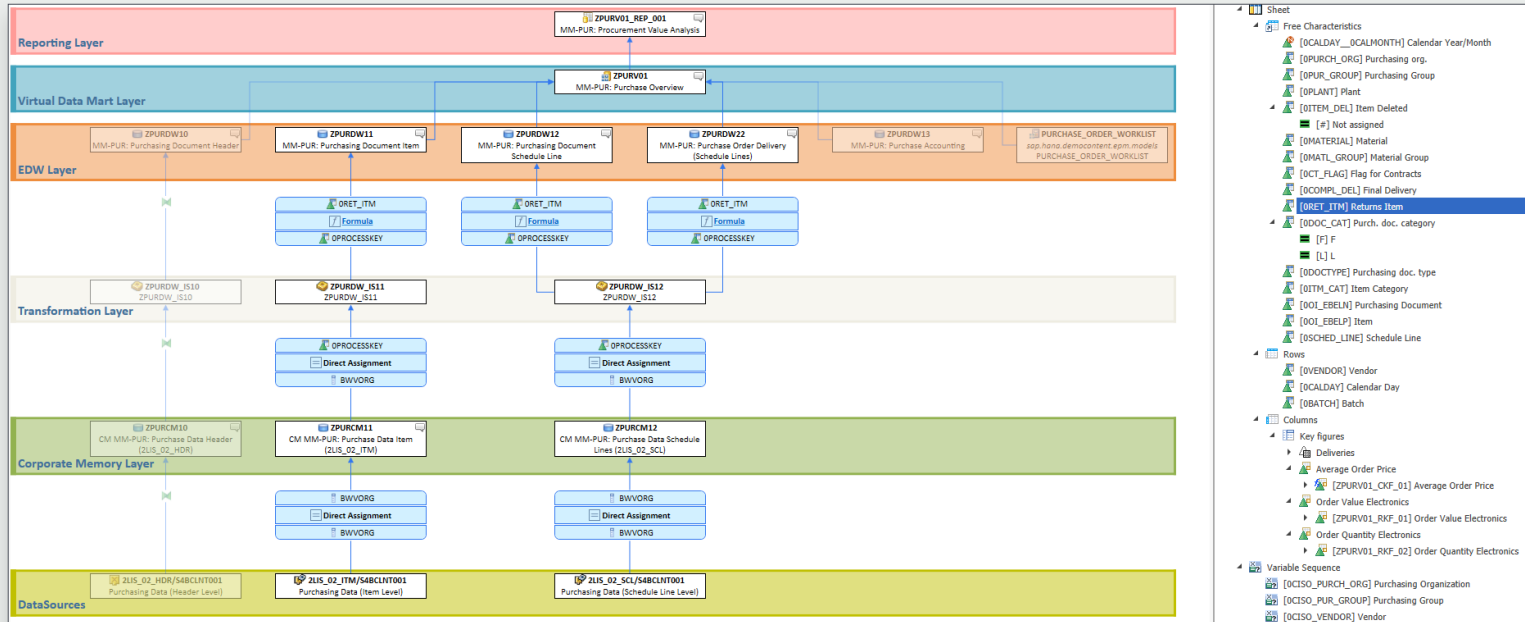
SAP BI Developers

## SUPPORTED SYSTEM TYPES

BW HANA BO SAC BPC S/4

## FUNCTIONS

- Cross-system where-used lists
- Data Flow Analysis
- Data Lineage
- Code Scan
- Housekeeping
- Object comparisons

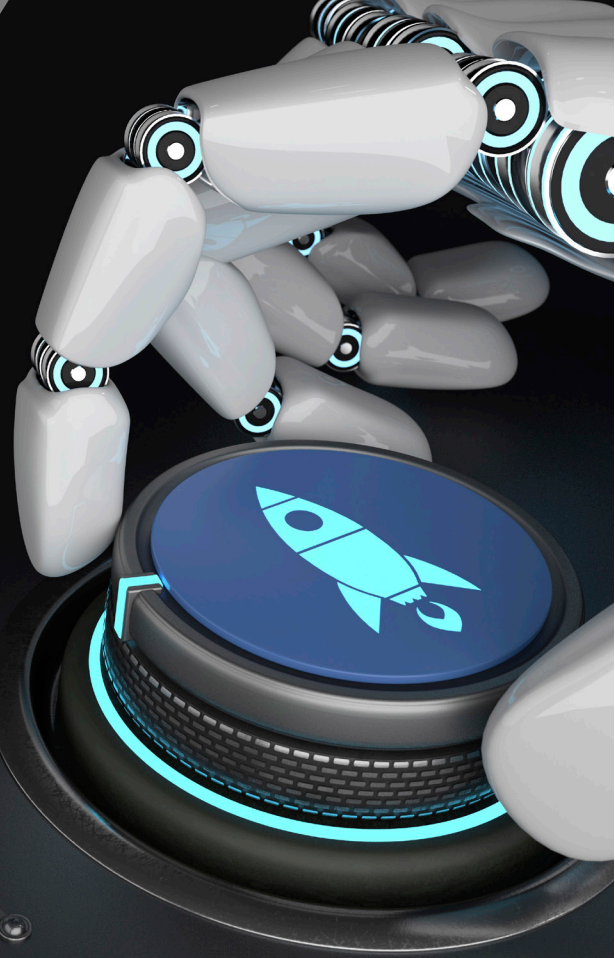




# MIGRATION BOOSTER

4HANA

BW



PERFORMER SUITE

**USE CASE**

Migration tool to support BW/4HANA or BWonHANA migrations

**TARGET GROUP**

SAP BI Developers

**SUPPORTED SYSTEM TYPES**

BW

**FUNCTIONS**

- Conversion of object types
- Remodeling of objects
- Modification of technical names and object descriptions
- Consolidation of InfoObjects
- Copying of existing reporting elements



*TRANSLATION STEWARD*



PERFORMER SUITE

## USE CASE

Translation tool for SAP BW object descriptions in multilingual systems

## TARGET GROUP

SAP BI Developers

## SUPPORTED SYSTEM TYPES

BW

## FUNCTIONS

- Inventory of all descriptions in the BW system
- Integrating multilingual descriptions into a dictionary
- Completion of missing descriptions in the tool or in the exported dictionary
- Transfer of newly translated descriptions into BW system with a single click
- Write adapted objects to transport request if necessary

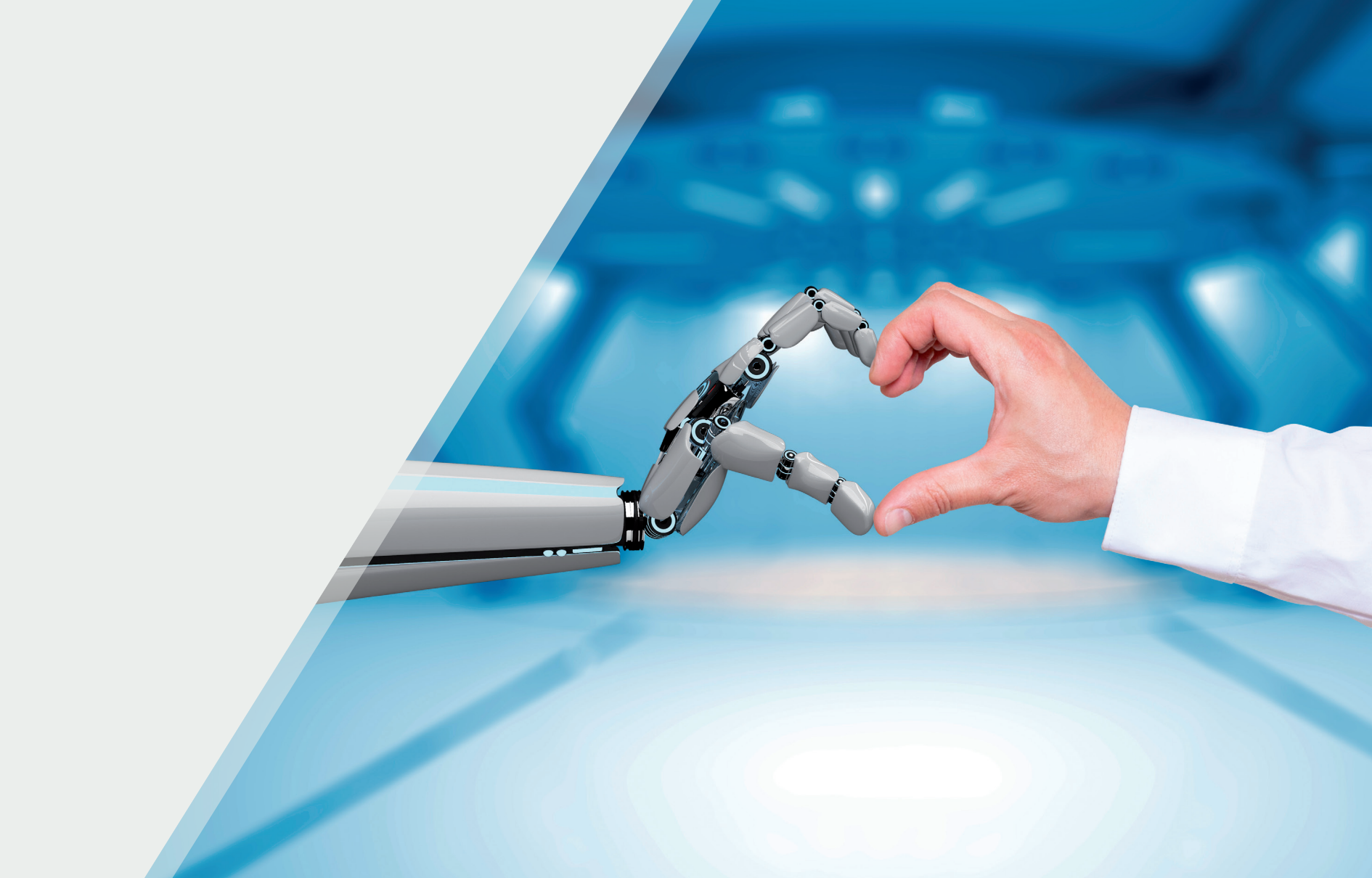
The screenshot displays the SAP BW translation tool interface. The top bar shows the language selection set to 'English;German'. The main area is a table with columns for 'Short Description' and 'Long Description'. The table is organized into a tree structure under the object 'ZQUERY\_SALES\_REP'. The tree includes a 'Filter' section with 'Characteristic Restrictions' (ZCHAR12) and a 'Sheet' section with 'Free Characteristics' (ZCHAR11, ZCHAR12, ZCHAR11\_ZCHAR14). Each characteristic has two rows for English (En) and German (De) descriptions. A dropdown menu is open for the 'Sales Report' entry, showing the German translation 'Verkaufsbericht'. The interface also includes a toolbar with various icons and a help icon in the top right corner.

	Short Description	Long Description
English;German		
ZQUERY_SALES_REP		
En	Sales Report	
De		
Filter		
Characteristic Restrictions		
ZCHAR12		
En	Product	
De		
Sheet		
Free Characteristics		
ZCHAR11		
En	Location	Query specific
De		Query specific
ZCHAR12		
En	Product	Query specific
De		Query specific
ZCHAR11_ZCHAR14		
En	Location City	Query specific
De		Query specific

# A SELECTION OF OUR CUSTOMERS

Leading companies already chose the Performer Suite, to make work with SAP applications more efficient and up-to-date.





# **Kontakt & QR Code**