



DOCU PERFORMER

WHAT'S NEW IN VERSION 19.1

 bluetelligence

Introduction	3
User Manual	4
Redesign	5
Improvements Scenarios	6
Redesign 3rd-Party	8
Redesign Language Behaviour	9
BPC 11.0 Standard	10
Improvements Business Warehouse	11
Improvements Business Objects	15
Further Improvements	19



Visit our website
www.bluetelligence.de

Write us an email
info@bluetelligence.de
support@bluetelligence.de

Visit our
User Manual

Give us a call
+49 611 16779040

Visit our blog
blog.bluetelligence.de

Follow us on Twitter
[@DocuPerformer](https://twitter.com/DocuPerformer)

Watch our video tutorials on
YouTube

INTRODUCTION

We are pleased to announce the new release 19.1 of Docu Performer. In the new version we have improved the Docu Performer with practical features and numerous other enhancements. Thanks a lot for the many suggestions and feature requests, which we have also implemented in the new release.

You probably already noticed some changes in this document! A selection of the general changes and features:

- The User Manual is now available online and has been completely updated and revised (p. 4).
- The version 19.1 follows after the old version 15.2. The versions represent the respective year of the release of the Docu Performer version. When updating to 19.1 the installed version must be at least 15.0.
- We are pleased to share with you our new corporate design (p. 5)!

A complete list of all changes can be found at:

<http://bluetelligence.de/support-de/version-history/>

If you have any questions, please contact us:

<http://helpdesk.bluetelligence.de>

State: 19.1

Datenbank update necessary?

Yes.

New license file necessary?

Only if last installed version is older than 12.6.0.

Update of Function Modules necessary?

Yes.

Update of HANA Delivery Unit required?

No.

Minimum version for update to 19.1:

15.0

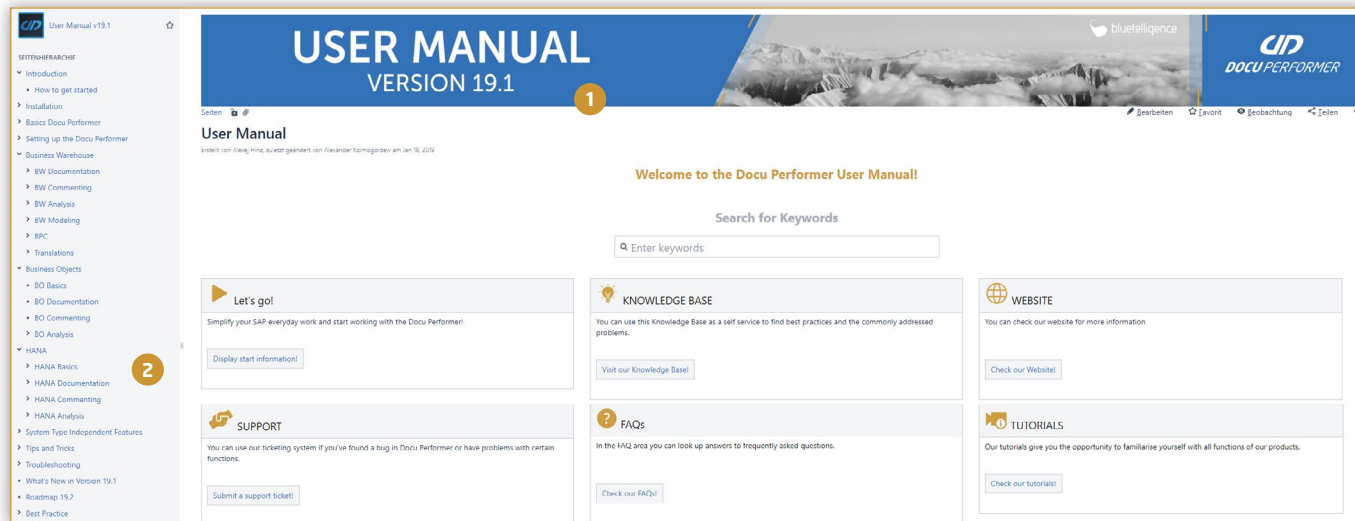


Visit our User Manual:
Click [here](#)

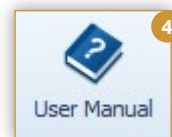
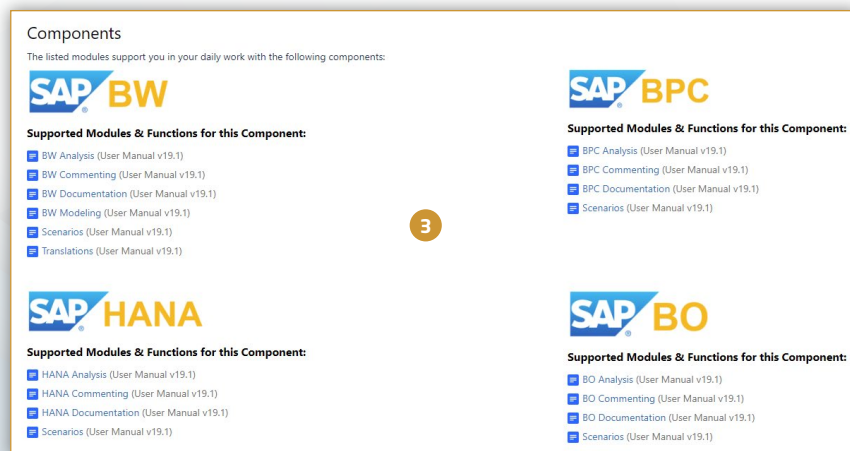
USER MANUAL

Do you have Questions?

Then you will find all answers regarding the Docu Performer in the new User Manual! The User Manual is now available online and has been supplemented with a lot of helpful information. Visit our User Manual and discover some of the features of Docu Performer that may not be known yet!



- 1 With every major release we publish a updated version of the User Manual.
- 2 Topics like BO, HANA, Modelling and Translations have been added to the User Manual.
- 3 Visit our User Manual and discover exciting functions for your SAP applications!
- 4 You can call up the User Manual as usual from the Docu Performer under *Help > User Manual* or at the respective functions.



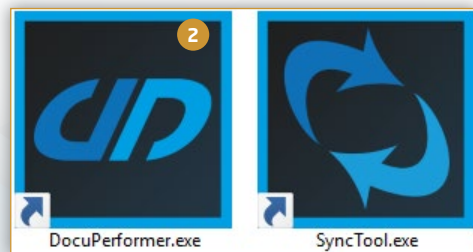
REDESIGN

New Corporate Design for the Docu Performer

As you may have noticed, a lot has changed optically since the last Docu Performer release. The visual changes of the corporate design can be found in documents, in the User Manual and in the software itself.



- 1 You will find design changes in the splash screen, the login window and in the software itself.
- 2 The new desktop icon has changed as well.



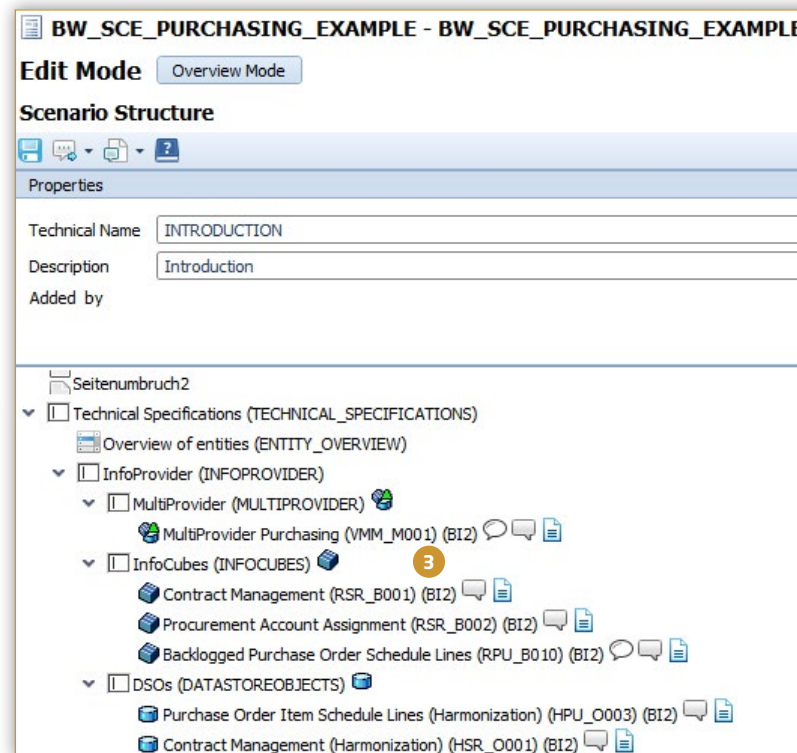
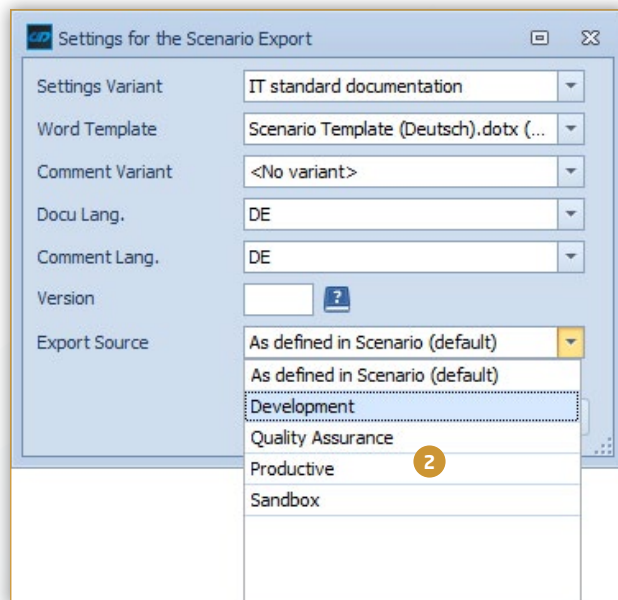


IMPROVEMENTS SCENARIOS

Selection of the Export Source

In 19.1 it is possible to select an export source (e.g. Development, Quality, Productive) for scenario export. Only the entities of the selected system level are then taken into account for the export..

	LID	System	Description EN	Description DE	Description FR	Level
Business Warehouse						
	1	BI1	BW 7.4 (any DB)			Productive 1
	1	BI2	BW 7.5 on HANA			Development



- 1** To be able to use this function, you have to define the level of your systems within the landscape under *Administration > Maintain SAP System Description and Level*.
- 2** In the scenario export window you can specify under *Export Source* which entities of a system in the system landscape should be included in the export.
- 3** With this functionality you do not have to create multiple scenarios for each system level of the system landscape. Instead, you can select entities of a particular level with a single click. If *Productive* is selected as the export source in this example, the entities of system *BI1* are taken into account.

IMPROVEMENTS SCENARIOS

Quicker Scenario Assignment

Scenario assignment from the Entity Grid is now faster due to the new entry in the context menu.

Drag a column header here to group by that column

Icon	Type	Technical Name	Description long - En	Changed Date	Last Changed By	Last doc.
	HCPR	AD_HCPR_99	Beschreibung [en] t	7/11/2018	ADUERRSTEIN	
	HCPR	AD_HCPR_99_1	Beschreibung [en]	6/26/2018	NMEYER	
	HCPR	AD_HMAP00	AD_HMAP00	9/6/2017	ADUERRSTEIN	
	HCPR	AH_CPT01	AH_CPT01	11/1/2018	ADUERRSTEIN	
	HCPR	CC_HCPR1		9/7/2017	ADUERRSTEIN	
	HCPR	CP_DP576		12/11/2018	ADUERRSTEIN	
	HCPR	DSR_HC_01		8/11/2017	ADUERRSTEIN	
	HCPR	EG_HCPR01				
	HCPR	EG_HCPR1				
	HCPR	HCPR1				
	HCPR	HCPRFLD1				
	HCPR	HCPRFLD2				
	HCPR	HCPRFLD3				
	HCPR	HCPRFLD4				
	HCPR	HCPRWITHHCPR				
	HCPR	HCPR_FIELDS				
	HCPR	HCPR_HANA				
	HCPR	HCPR_IN_HCPR	HCPR_IN_HCPR	11/12/2018	LHUWE	
	HCPR	HCPR_NAV	HANA CompositeProvider with Navigation Attrib...	2/17/2017	ADUERRSTEIN	
	HCPR	HCPR_T12	MultiProvider Purchasing	1/16/2017	ADUERRSTEIN	
	HCPR	HCPR_T99	TEST	10/19/2018	ADUERRSTEIN	
	HCPR	H_ADITT	test1	7/17/2018	ADUERRSTEIN	

- 1 To be able to assign scenarios quickly, you must first open the context menu of an entity.
- 2 Under *Assign Scenario* the five scenarios to which entities were last assigned will be displayed. You can assign one or multiple entities to a scenario via a single click.



Visit our blog for more information:
en.blog.bluetelligence.de

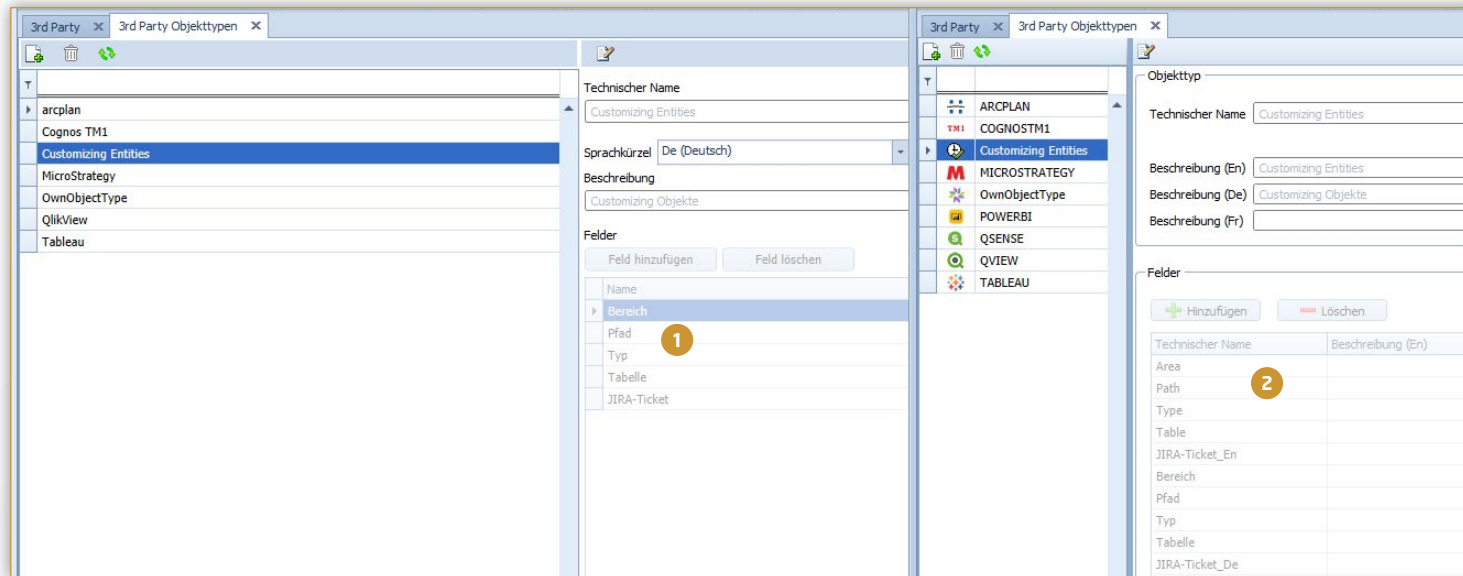
REWORK OF 3rd PARTY ENTITIES

Improved Handling and new Features

The 3rd Party component offers you the perfect opportunity to integrate entities from 3rd party systems into your documentation. Before the latest release of Docu Performer, the fields for 3rd party entities could be maintained individually for each language. This is no longer possible with the latest release: A field can now have descriptions in different languages, but technically it is the same field with the same content. This leads to the challenge that the old logic had to be migrated. A new field is defined from the old field. If fields in several languages have the same name, several fields are generated and the respective language abbreviation is added at the end.

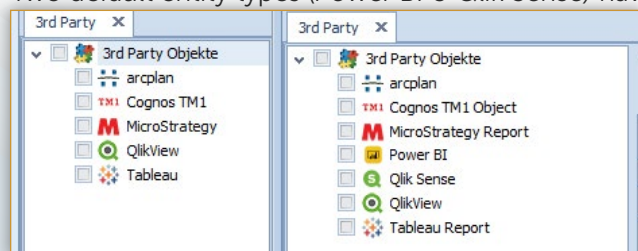


You can find detailed instructions for the creation of 3rd party objects in our [User Manual](#).



- 1 Example: There are the english fields *Path* and *JIRA-Ticket*. In German there are the fields *Pfad* and *JIRA-Ticket*.
- 2 A new field was generated from the old field. If there were fields with the same name in several languages (e.g. *JIRA-Ticket*), two new fields are generated from them and the language abbreviation is added at the end (e.g. *JIRA-Ticket_En*).

Two default entity types (*Power BI & Qlik Sense*) have been added to the 3rd part entity tree.



REWORK LANGUAGE BEHAVIOR

New Language Behavior

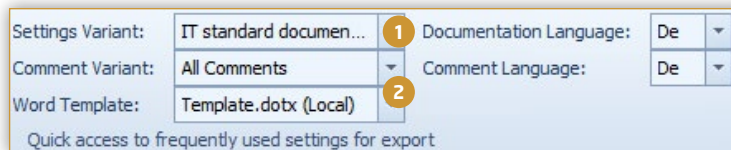
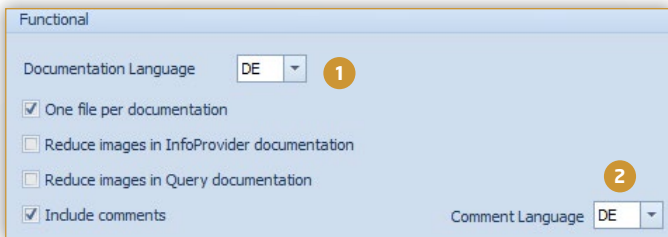
The language behaviour was modified in 19.1 as follows:

The UI language that can be selected in the login window is English and German.

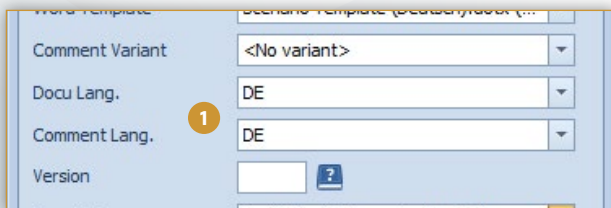


The language of your documentation depends on the set documentation language in your general settings and in the *Quick access export settings*.

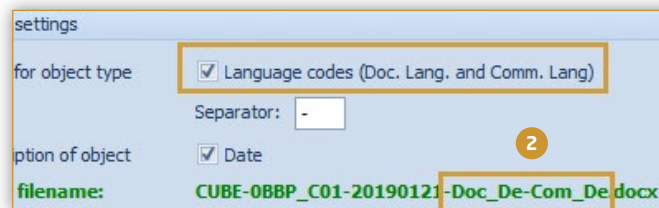
The language of your comments in your documentation also depends on the comment language set in your general settings and in the *Quick access export settings*.



Both language settings can be selected again when exporting the scenarios.



The two selected language settings can be displayed in the file name.



An overview of the different languages can be found in the [User Manual](#).

1 The logon language only influences the user interface of the Docu Performer and only English or German can be selected.

1 The Documentation Language can be defined under *General Settings > Functional > Documentation Languages*. This setting can be overwritten in the *Quick access export settings*.

2 The documentation language can be defined under *General Settings > Functional > Documentation Languages*. This setting can be overwritten in the *Quick access export settings*.

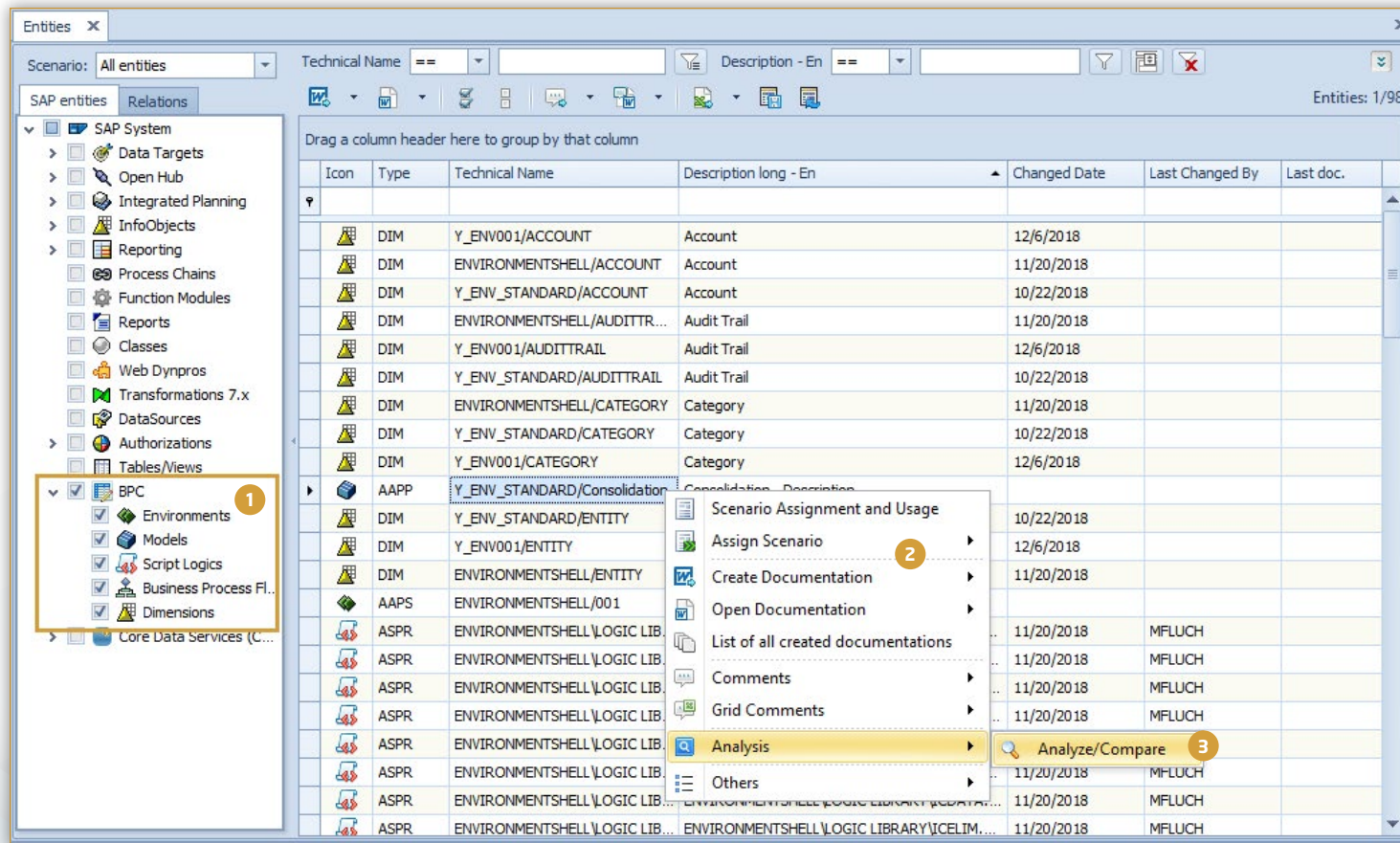
1 Scenarios can be exported for multilingual target groups by changing the documentation and comment language.

2 The selected language settings can be appended to the file name of the documentation under *General Settings > Filename settings > Language codes (Doc. Lang. and Comm. Lang.)*.

IMPROVEMENTS BPC

Support BPC 11.0 Standard for SAP BW/4HANA

Version 19.1 of the Docu Performer fully supports the BPC 11.0 standard. Comment, document and analyze the entities of the new version in your BW/4HANA system!



- 1 All known entity types are now also supported for the BPC 11.0 standard version.
- 2 Document individual BPC entities or assign them to scenarios to create a project documentation.
- 3 Analyze individual entities, display the coding of script logics or view scheduled packages with the useful analysis functions.

IMPROVEMENTS BUSINESS WAREHOUSE

Excel Export for HANA Composite Provider

Starting with the new version, you now have the possibility of exporting the entity type *HANA CompositeProvider* in to an Excel file.

The screenshot shows a table with columns for Group (Tech. Name), Group (Description), FieldInfoObject (Tech. Name), FieldInfoObject (Description), Associated Object, Reference-Char., Type, and Length. A context menu is open over the first row, with 'Create Documentation' selected. A sub-menu is displayed, listing options: docx file, PDF file (requires Office 2007 or later), HTML file (requires Office 2007 or later), docx + PDF file (requires Office 2007 or later), **xlsx file** (marked with a '1'), and Delta documentation.

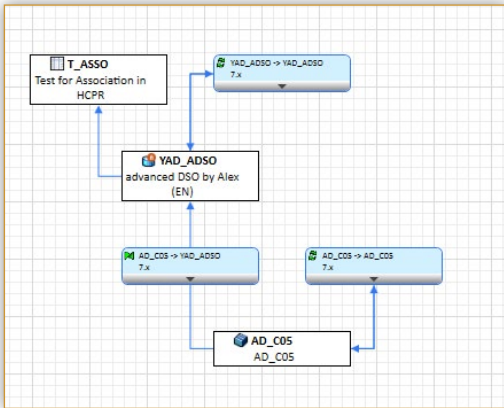
- 1 You can initiate the Excel export of an *HCPR* entity via the context menu *Create Documentation > xlsx file*.
- 2 The Docu Performer then generates documentation in Excel format.

Group (Tech. Name)	Group (Description)	FieldInfoObject (Tech. Name)	FieldInfoObject (Description)	Associated Object	Reference-Char.	Type	Length
RSR_B0022	Vendor	0GN_SRVPROV	Service Provider	0GN_SRVPROV		CHAR	60
		0GN_VENDOR				CHAR	60
		0VENDOR		0VENDOR			
		0BBP_VENDOR				CHAR	10
RSR_B0023	Product / Product Description	0PRODUCT	Product	0PRODUCT		CHAR	60
		0MATERIAL	Material	0MATERIAL		CHAR	18
		0MATL_GROUP	Material Group	0MATL_GROUP		CHAR	5
		0PLANT	Plant	0PLANT		CHAR	4
		0STOR_LOC	Storage location	0STOR_LOC		CHAR	4
RSR_B0024	Product Type / Product Category	0PROD_CATEG	Product Category	0PROD_CATEG		CHAR	52
		0GN_CAT_PUR	Purchase Category	0GN_CAT_PUR		CHAR	60
RSR_B0025	Logical Systems	0LOGSYS_PUR	Logical Procurement System	0LOGSYS_PUR	0LOGSYS	CHAR	10
RSR_B0026	Account Assignment Cost Center / Order	0COORDER	Order Number	0COORDER		CHAR	12
		0CO_AREA	Controlling area long	0CO_AREA		CHAR	4
		0COSTCENTER	Cost Center	0COSTCENTER		CHAR	10
RSR_B0027	Account Assignment Asset	0ASSET_MAIN	Main Asset Number	0ASSET_MAIN		CHAR	12
		0COMP_CODE	InfoProvider spec. text 0COMP_CODE1	0COMP_CODE		CHAR	4
RSR_B0028	Account Assignment G/L Account	0CHRT_ACCTS	Chart of accounts	0CHRT_ACCTS		CHAR	4
		0GL_ACCOUNT	G/L Account	0GL_ACCOUNT		CHAR	10
RSR_B0029	Account Assignment WBS Element / Network	0NETWORK	Network	0NETWORK		CHAR	12
		0WBS_ELEMT	Work Breakdown Structure Element (WBS Element)	0WBS_ELEMT		CHAR	24

IMPROVEMENTS BUSINESS WAREHOUSE

Improvements Analysis

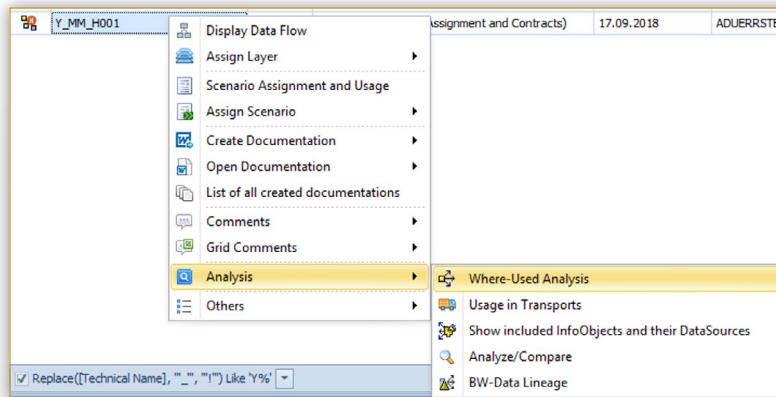
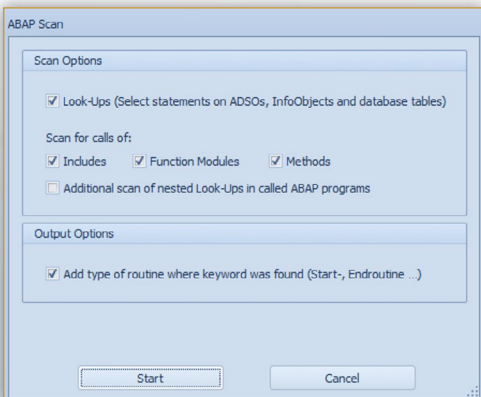
The entity type *Open ODS Views* is now supported for data flow analysis.



Data flows can now also be displayed in real time.



ABAP and AMDP scan are now also supported in the data flow view, in the Where-used Analysis, and in the ABAP scan for BW/4HANA.



IMPROVEMENTS BUSINESS WAREHOUSE

Further Improvements

The entity types *ADSOs*, *HCPRs*, *Open ODS Views* are now also supported for the function *Compare Entities of Systems*.

Current system: BI2
 Second system: ZW2

Entities to be compared:

- Queries
- Calculated Key Figures
- Restricted Key Figures
- Structures
- Filters
- Variables
- Characteristics (InfoProvider)
- InfoSources 7x
- Aggregation Levels
- Planning Functions
- Planning Sequences
- InfoObjects
- ABAP Reports
- Function Modules
- Classes
- Process Chains
- Open ODS
- Advanced DSOs
- CompositeProvider

Scenario: All entities

Start comparison

BI2 - Current system								ZW2 - Co						
Drag a column header here to group by that column								Drag a column header here to group by that column						
	Tech. name	Type	Ver.	Description	UID	Last...	Last ch...	SID		Tech. name	Type	V...	Description	UID
	/IMO/D_SD50	ADSO		SD-DLV: Order Item1		7/23...	NMEYER	BI2		/IMO/D_SD50	ADSO		SD-DLV: Order Item	
	0EPM_ADSO1	ADSO		ADSO for Open Sa...		8/20...	NMEYER	BI2		0EPM_ADSO1	ADSO		ADSO for Open Sa...	
	AD_DP576	ADSO		AD_DP576		12/1...	ADUER...	BI2		AD_DP576	ADSO		AD_DP576	
	ADSO_T1	ADSO				10/1...	ADUER...	BI2		ADSO_T1	ADSO			

DataSources are displayed in the function *Show inactive Entities*.

Icon	Type	Technical Name
	RSDS	80RSTT_007/EC2CLNT800
	RSDS	80RSTT_008/EC2CLNT800
	RSDS	80RSTT_009/EC2CLNT800

The Where-used Analysis can also be executed for *ABAP CDS Data Definitions*.

Select entity type: Data Definitions

Where-Used Analysis for Y_I2_FLIGHTCONNECTION

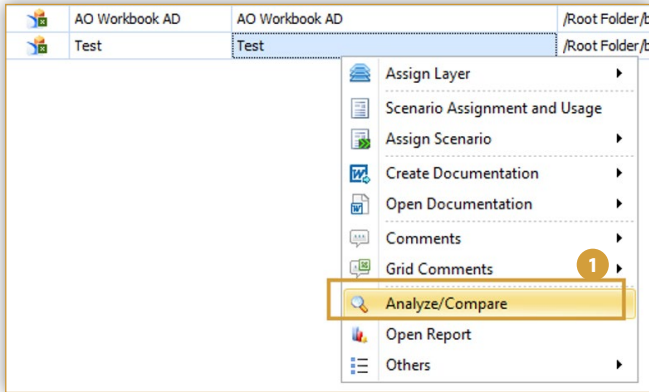
In BW Objects

Type	Tech. Name	Path	Description
DDL	Y_I3_FLIGHT	-	Y_I3_FLIGHT

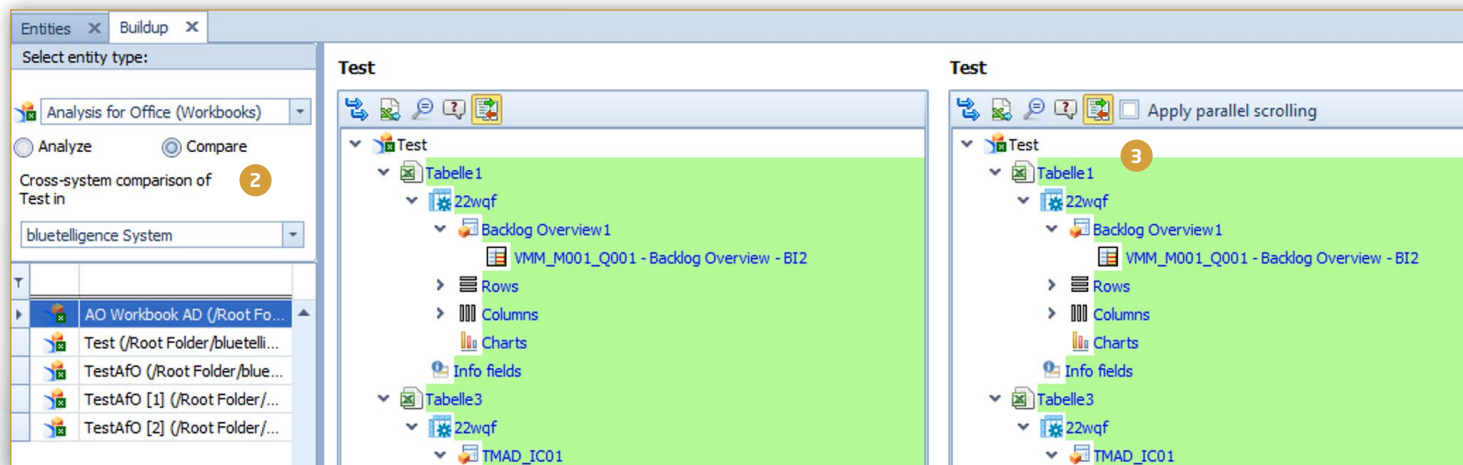
IMPROVEMENTS BUSINESS OBJECTS

Comparison of two BO Entities

The structure of BO entities can now be compared across systems.



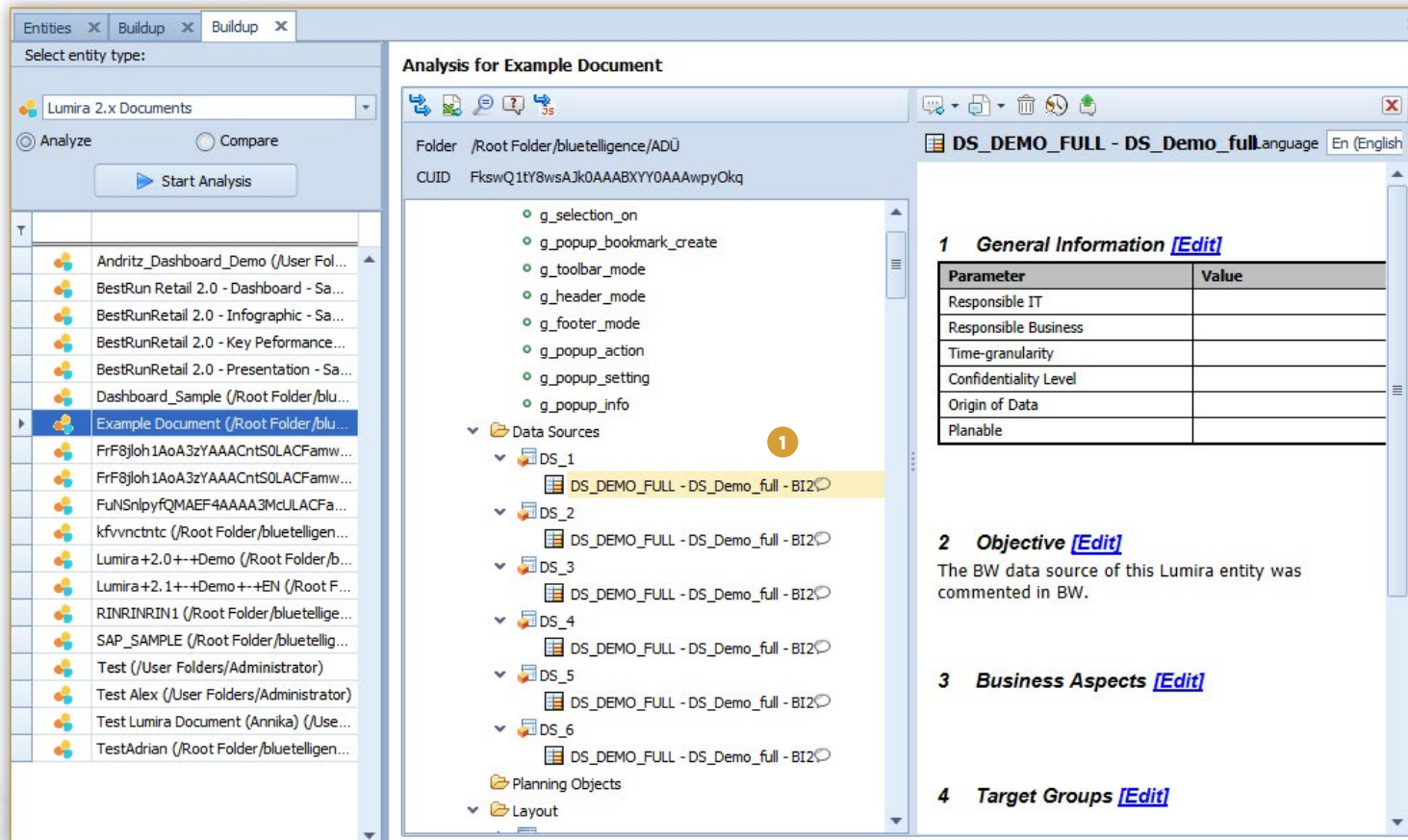
- 1 The BO entity can be analyzed and compared via the context menu or via *Analysis > Analyze/Compare*.
- 2 Clicking *Compare* activates the compare mode. Now you can compare entities from the same system or from another system.
- 3 As in BW, differences in the structure can be highlighted in color to identify differences more quickly.



IMPROVEMENTS BUSINESS OBJECTS

Integration of Comments

Comments of the BW Data Source of a BO entity are now completely integrated in the tree structure.

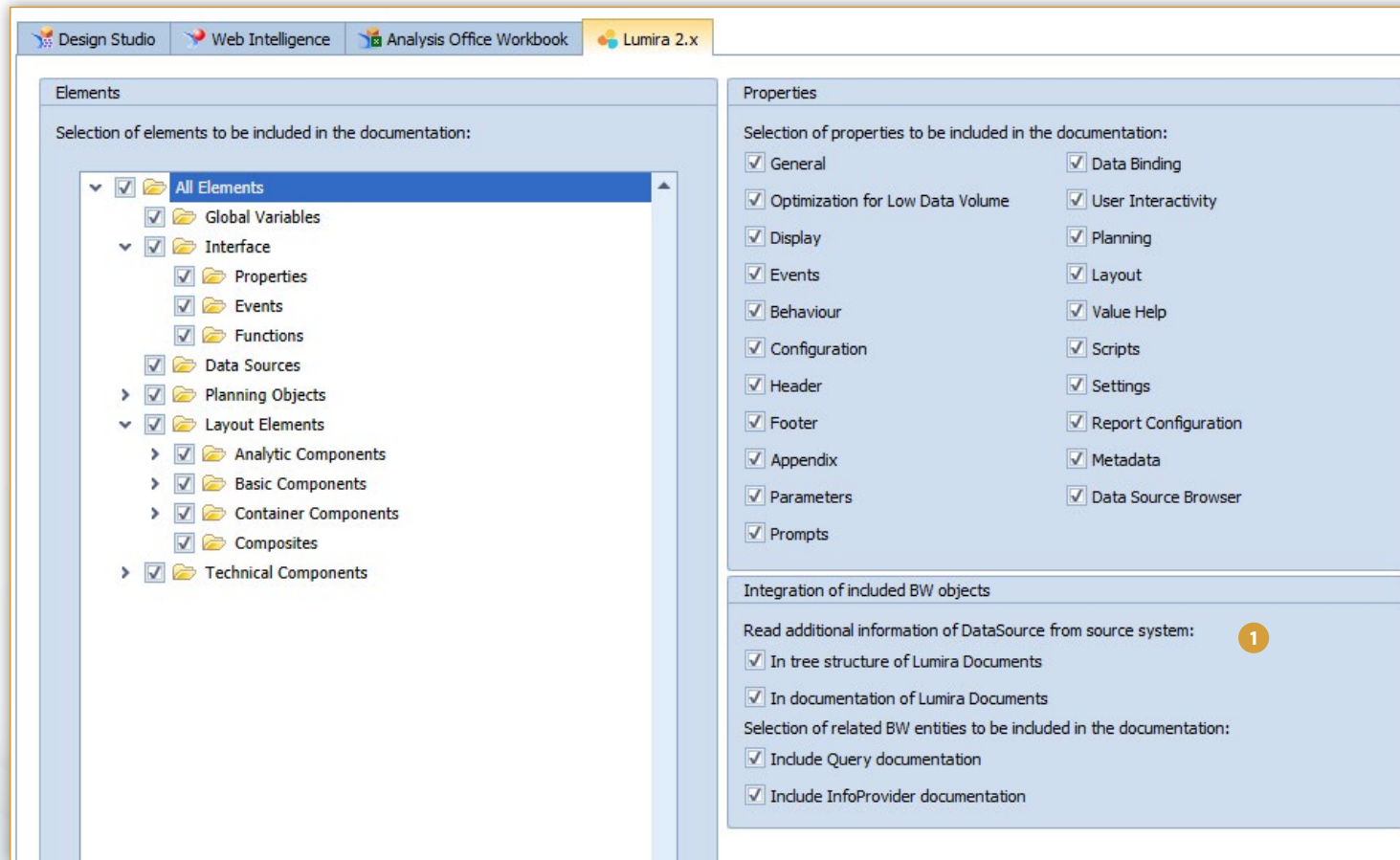


1 The comment was created in BW, but is now also displayed in the tree structure of the Lumira entity and can also be edited.

IMPROVEMENTS BUSINESS OBJECTS

Improvements LUMIRA 2.x

The individual Lumira Documents can now be commented. Further documentation export settings (descriptions & types of data sources) have also been added to the settings.



1 The settings regarding the integration of BW entities can be made under *Settings > Business Objects > Properties > Selection of properties to be included in the documentation.*

Are you satisfied?

Please give a recommendation.



Recommend Docu Performer on SAP App Center!